



## Model VF3000 Volumetric Screw Feeder

Web-Tech's model VF3000 Volumetric Feeder is designed to handle a broad range of dry materials, and feeding applications. The VF3000 is ideal for all applications that require consistent and accurate metering of powders, pellets and granules, suitable for industries such as Plastics, Food, Chemicals, Building Products, Water Treatment and many others. The VF3000 is ideal for medium to large capacity applications. A large inlet size reduces the possibility of material bridging.

The VF3000 is a medium to large capacity Volumetric Feeder, available in a two pack epoxy finish, or optionally fabricated from stainless steel. The VF3000 is available in capacities ranging from 0.05 m<sup>3</sup>/Hr to 13 m<sup>3</sup>/Hr.

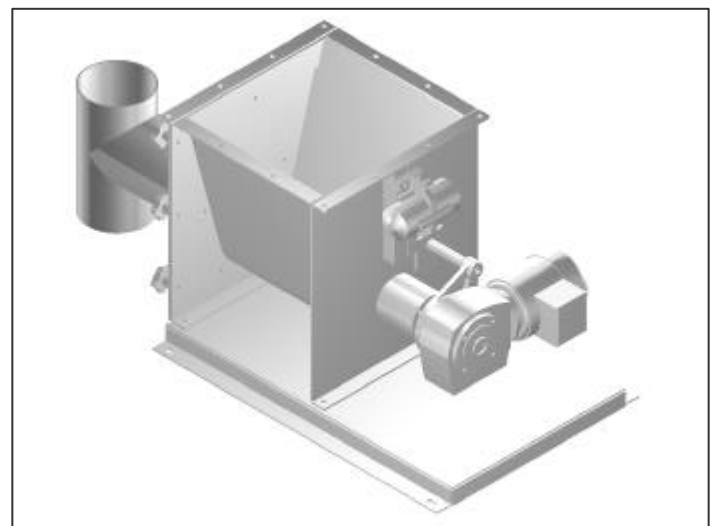
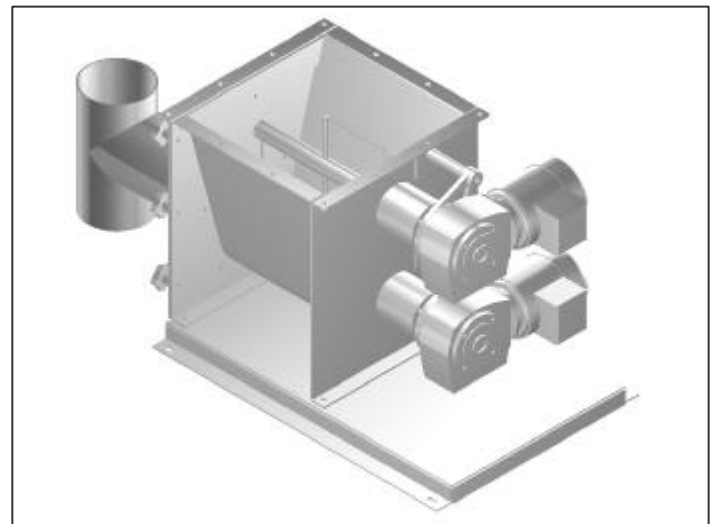
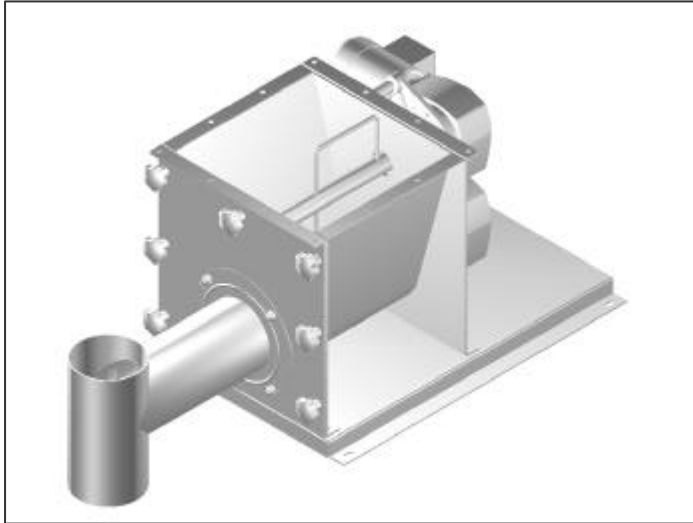
The feeder is designed to be easily disassembled for cleaning purposes. The front cover, metering screw and metering tube, can be removed to allow access to the feeder hopper.

For products that are only semi-free flowing, the VF3000 can be provided with either a vibrator, or an internal agitator. The vibrator can be supplied with an optional timer controller, which pulses the vibrator at a predetermined time interval whilst the feeder is running. The internal agitator option consists of an agitator blade and additional drive motor.

The VF3000 can be bolted directly to the bottom of an existing hopper, or can be supplied free standing. A range of various capacity extension hoppers are available upon request.

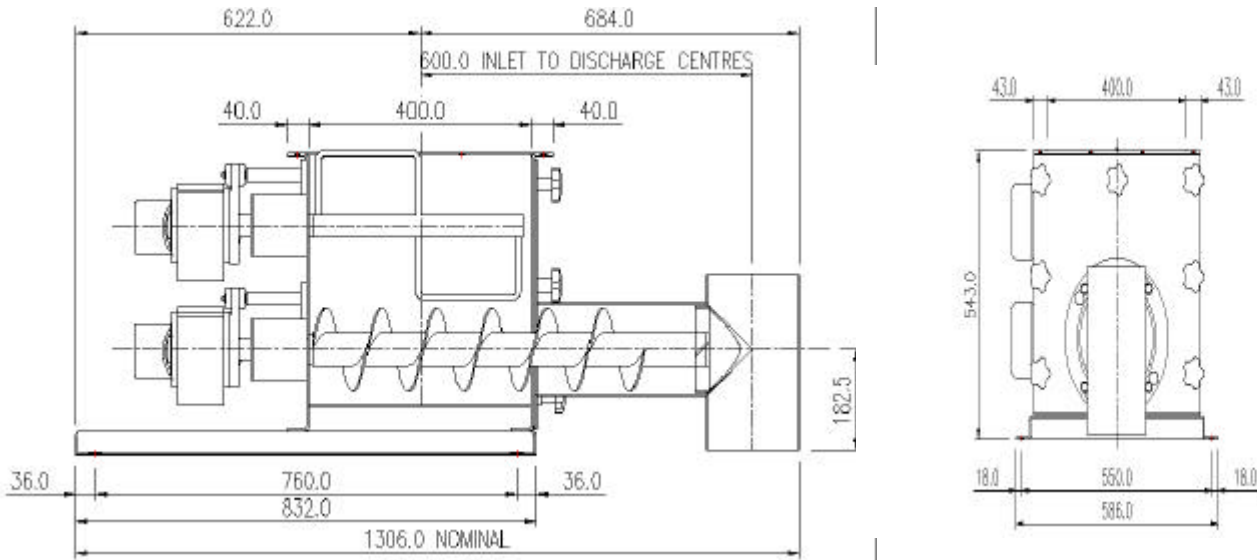
Variable speed control is available by means of an optional AC variable speed controller.

Typical accuracies of  $\pm 0.5\%$  to  $\pm 3\%$  are possible, depending on the type of material to be metered. For applications requiring higher accuracies, please refer to our range of Loss-In-Weight Feeders.





# WEB-TECH



## SPECIFICATIONS – MODEL VF3000

- Construction : Mild Steel – 2 pack epoxy (Stainless Steel optionally available)
- Capacities : 0.05 m<sup>3</sup> to 13 m<sup>3</sup> per hour
- Screw Diameter : 75 / 100 / 125 / 150
- Power : 415 VAC, 3 phase (240 VAC, 1 phase if using Variable Speed Drive)
- Agitator Type : Internal, to suit product
- Vibrator Type : 240 VAC, 1 phase
- Turndown Range : Typically 10:1

Note: Dimensions and specifications are subject to change.



**Web-Tech Australia Pty Ltd**

**Brisbane Ph (07) 33841 2844 Fax (07) 3841 0005**

**Sydney Ph (02) 9757 2296**

**Melbourne Ph (03) 9653 9260**

**Email: [webtech@onaustralia.com.au](mailto:webtech@onaustralia.com.au)**

**[www.web-tech.com.au](http://www.web-tech.com.au)**