

## Model WTS4 Series II Conveyor Belt Scale

Web-Tech's model WTS4 Series II Conveyor Belt Scale is a heavy duty system, suitable for belt widths from 450 mm to 2400 mm. The weighframe is a four idler, four load cell precision weigh scale, with typical accuracies of  $\pm 0.25\%$  to  $\pm 0.5\%$  achievable. The WTS4 Series II is ideal for inventory, ship loading or truck/train load out applications. The WTS4 Series II system is provided with a choice of Web-Tech's "Masterweigh" electronics, with various options to suit your application.

The WTS4 weighframe is supplied fully assembled for easy installation into the conveyor structure. The WTS4 weighframe is fabricated from heavy wall RHS to minimise deflection and twisting, even under heavy loadings.

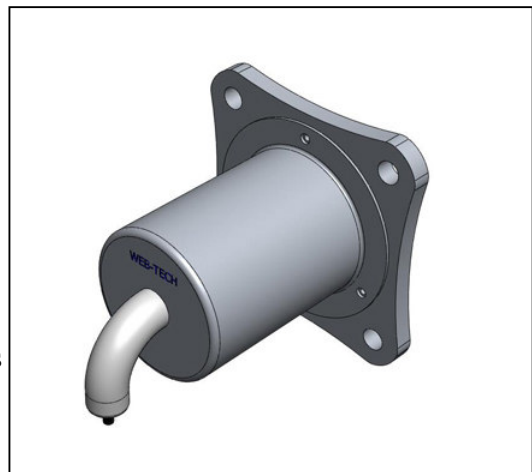
Standard models are available for 1000, 1200 and 1500 mm idler spacings. Other idler spacings are optionally available.

Web-Tech's "Masterweigh" range of microprocessor based electronics provide Rate and Total indication, as well as output signals for remote equipment. Features such as Automatic Calibration, Auto Zero Tracking, Service Diagnostics, Digital Filtering, and simple Menu Set-up are standard. All programmed information is protected from unauthorised access by means of field selectable codes.

A choice of belt speed sensors convert the belt speed into a digital signal, which ensures minute changes in belt speed are accurately measured.

Precision shearbeam load cells are contained within the weighframe structure, ensuring minimal chance of mechanical damage. The load cells are sized to suit the application, and can be upgraded at any time if a change in capacity is required.

Web-Tech has a wide range of Conveyor Belt Scales covering nearly all applications. Please contact us for further information regarding a system for your application.



## **SPECIFICATIONS**

### **Mechanical**

Construction Materials: Mild Steel – Powder coated Finish (Optionally Galvanised)  
Belt Widths : 450 to 2400 mm  
Idler Spacing : 1000/1200/1500 mm (Other Spacing Optionally Available)  
Load Cell Type : Precision Shearbeam  
Speed Sensor : Digital Incremental Encoder

### **Electronics**

Type : Microprocessor Based  
Enclosure : IP66 RFP (Stainless Steel optionally available)  
Power : 110/240 VAC, 1 phase, 1 A  
Display : 2 x 40 Backlit LCD  
Local Indications : Mass Rate and Total  
Programming : Integral Keypad  
Rate Output : Isolated 4-20 mA  
Totaliser Output : Pulse Output, 5/24 VDC or Voltage Free Contacts – Programmable 20 to 300 mS  
PID Output : Isolated 4-20 mA  
Load Cell Input : 0 – 32 mV

## **Web-Tech Australia Pty Ltd**

**Brisbane Ph (07) 33841 2844 Fax (07) 3841 0005**  
e-mail [webtech@onaustralia.com.au](mailto:webtech@onaustralia.com.au)

**Sydney Ph (02) 9757 2296 Fax (02) 9899 6585**  
email [webtechsydney@onaustralia.com.au](mailto:webtechsydney@onaustralia.com.au)

[www.web-tech.com.au](http://www.web-tech.com.au)