



Masterweigh 5 Electronic Integrator

"Masterweigh 5" is a precision microprocessor based electronic Integrator designed for use with the Web Tech AutoWeigh range of In motion and Continuous Weighing systems or for retrofitting load cell based systems from other manufacturers. It is typically suitable for the following weighing applications:

- Conveyor Belt Scales
- Weigh Belt Feeders
- Screw Weighing Systems
-

STANDARD FEATURES

- Microprocessor based.
- IP66 reinforced polyester enclosure.
- Modular in design – easily serviceable.
- Simple menu driven interface.
- Integral keypad with calibration "Hotkeys".
- 2 x 40 character backlit LCD display.
- All commands in simple English – No hieroglyphics or codes used.
- 8 digit Mass Rate display.
- 8 digit Mass Total display.
- Isolated 4-20mA Rate output.
- Remote Totaliser output.
- "Weigher Healthy" relay output.
- Programmable "Auto Zero Tracking" function with "Out of Limits" relay output.
- Service menus allow load cell and speed sensor values to be read without the need for test meters.
- Automatic Zero & Span calibrations.
- CE tested and approved.

OPTIONAL FEATURES

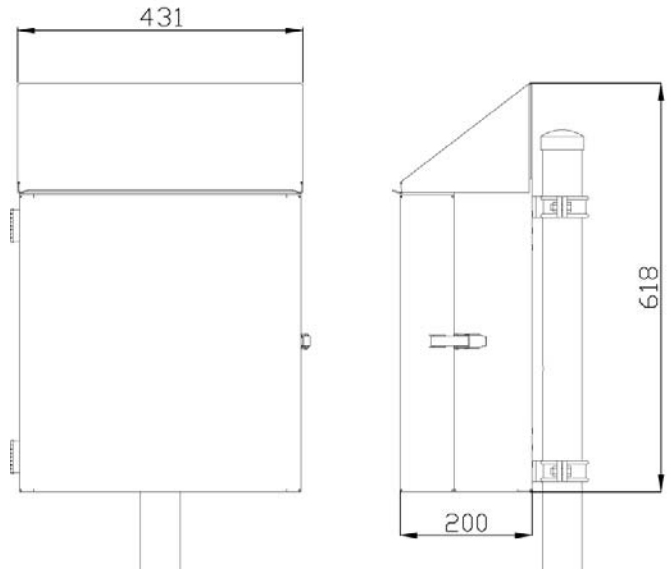
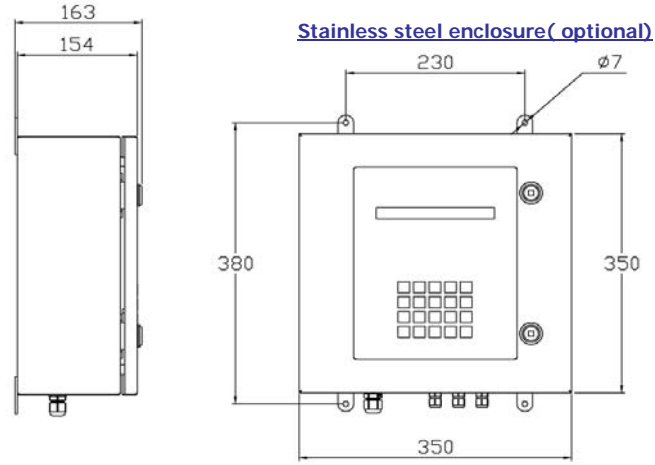
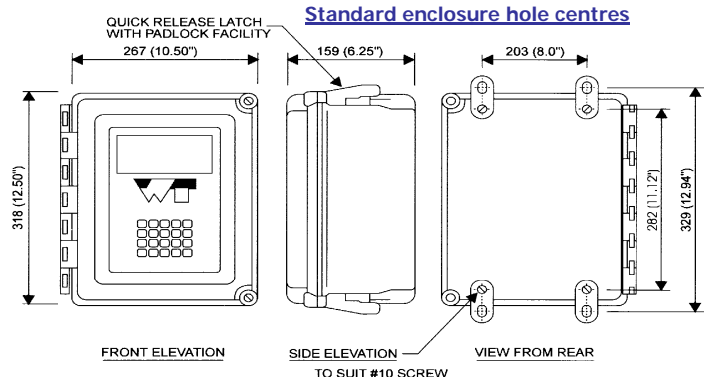
- 304 or 316 stainless steel enclosure.
- Sloping roof enclosures.
- Stainless steel sunshade.
- DIP enclosure.
- Intrinsic Safety barriers.
- Load cell lightning surge protection.
- RS485 serial output.
- Real time clock for optional printer.
- Special applications software



Standard RFP Enclosure



Optional stainless steel enclosure



Technical Specification

- Power Requirements:** 110/240 VAC (switch selectable) +/- 10%, 50/60Hz. 12/24/48 VDC optional.
- Temperature Range:** -10°C to +40°C. Optional enclosure heater for lower temperatures.
- Load Cell Excitation:** 10 VDC, up to eight (8) 350 ohm load cells.
- Load Cell Input:** 0 – 35mV.
- Speed Sensor Excitation:** 5 VDC to 15 VDC.
- Speed Sensor Input:** -50 V to +50 V DC or AC RMS. Maximum input frequency 800 Hz.
- Analogue Output:** Isolated 4-20mA for Rate, internally supplied.
- Totaliser Output:** 5 VDC/24 VDC/Voltage Free Contacts (link selectable). Pulse width programmable from 10 mS to 1 second.

Optional stainless steel sunshade
*Optional Nameplate



Web Tech AutoWeigh,
11 Electronics Street, PO Box 4006,
Eight Mile Plains, Brisbane,
Qld, 4113, Australia

Brisbane (Head office) Ph: (07) 3841-2844,
Sydney(NSW) / Australia Ph: 1800 777 90
International Ph: +61 7 3841-2844, Fax + 61 7 3841 0005
Email: info@web-tech.com.au Web Page: www.web-tech.com.au