

WTE “Sanki” Conveyor Belt Scale



The “WTE Sanki’ has been designed by Web Tech AutoWeigh to be installed into “modular” type conveyors. The “WTE Sanki” conveyor belt scale has been specially designed to fit into the confines of the modular conveyor framework, and can be supplied to suit any belt width. Modular type conveyors are commonly used for pilot plants and low capacity applications. The “WTE Sanki” is suitable for the control of feed rates into the plant, monitoring plant performance, or maintaining consistent belt loading.

Accuracies in the order of $\pm 1.0\%$ to $\pm 2.0\%$ are achievable.

Weigh Frame

Web Tech Autoweigh’s model “WTE Sanki” is a single idler weigh frame that is specifically designed for simple installation. The weigh frame incorporates a single precision stainless steel load cell sized for the application, which is attached to the weigh idler by means of flexure based weighing mechanism. Available to suit any belt widths, the weigh frame is manufactured from stainless steel.

Electronics

The “WTE Sanki’ belt scale system is normally supplied with our “MasterWeigh 6” electronics. The MasterWeigh 6” electronics is a microprocessor based integrator and comes with the following standard features:

- Microprocessor based.
- 110/240VAC or 24VDC supply (optional).
- IP66 reinforced polyester enclosure.
- Modular in design – easily serviceable.
- Simple menu driven interface.
- Integral keypad with calibration “Hotkeys”.
- 2 x 40 character backlit LCD display.
- All commands in simple English – No hieroglyphics or codes used.
- 8 digit Mass Rate display.
- 8 digit Mass Total display.
- Isolated 4-20mA Rate output.
- Remote Totaliser output.
- “Weigher Healthy” relay output.
- Programmable “Auto Zero Tracking” function with “Out of Limits” relay output.
- Service menus allow load cell and speed sensor values to be read without the need for test meters.
- Automatic Zero & Span calibrations.
- Optional “Profibus”, or “Device Net” or “Ethernet/Modbus TCP”.



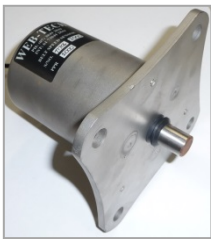
MasterWeigh 6" in standard
IP66 RFP Enclosure



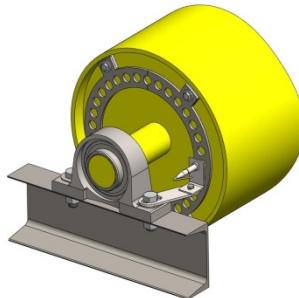
MasterWeigh 6" in optional
Stainless Steel Enclosure

Belt Speed Sensors

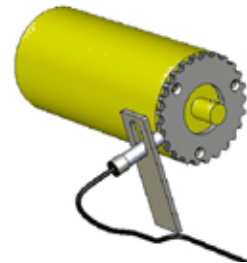
The "WTE Sanki" belt scale is normally supplied with a "trailing arm" type belt speed sensor which is attached to the weigh frame. The "trailing arm" assembly incorporates our stainless steel digital encoder. If this is not the preferred arrangement, we offer the following alternatives.



Stainless steel digital
Encoder (pulley mount)

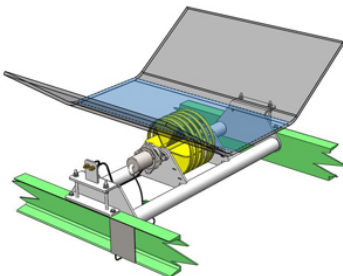


Proximity switch and
flags on tail pulley



Magnetic Pick-up
and sprocket on roll

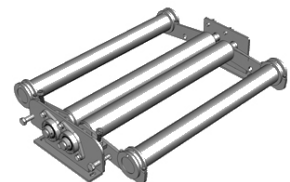
Options



Optional Spiral Pulley
and mounting frame



Stainless steel sunshade
for electronics



"In-Situ" Calibration
Weight