



Web-Tech Australia Pty Ltd

Model WTS2 Series II Belt Scale

Installation & Operation Manual



Web-Tech Australia Pty Ltd

TABLE OF CONTENTS

Section	Description
1.	Unpacking the Equipment.
2.	Belt Scale Installation Guide.
3.	Weighframe & Electronics Installation.
4.	Belt Speed Sensor Installation
5.	Masterweigh 5 Operation
6.	Drawings
7.	Addendum
8.	Calibration Sheets

MODEL WTS2 SERIES II - UNPACKING

EQUIPMENT PACKING

1. WEIGHFRAME

The weighframe is shipped in a timber crate, and is retained by bolts in the floor of the crate. Remove these bolts before attempting to lift out the weighframe.

2. ELECTRONICS

The “Masterweigh” electronics and enclosure are shipped in a separate cardboard box. When removing the packing, be sure to check for any documentation that may be supplied within the box.

3. BELT SPEED SENSOR

The belt speed sensor is normally shipped in the same box as the “Masterweigh” electronics.

4. CALIBRATION WEIGHTS

The calibration weights (if supplied) are shipped in the same crate as the weighframe. They are also bolted to the floor.

5. WEIGH IDLERS

If weigh idlers have been supplied by Web-Tech, these will be packed on a separate pallet or skid.

STORAGE

If the equipment is to be stored for a long period prior to installation, we would suggest that the equipment be covered if in an outdoors situation.

EQUIPMENT DAMAGE

If any equipment has been damaged in transit, or some item(s) appears to be missing, please contact Web-Tech immediately.



**Web-Tech Australia
Pty Ltd.**



BELT SCALE SELECTION AND INSTALLATION GUIDE

BRISBANE

SYDNEY



WEB-TECH

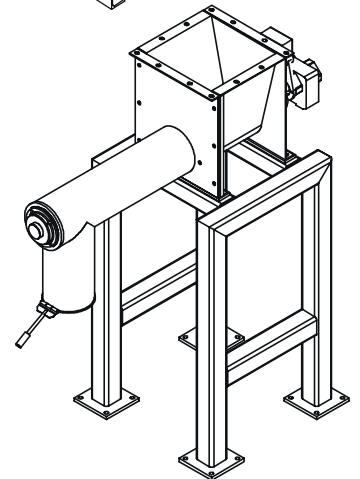
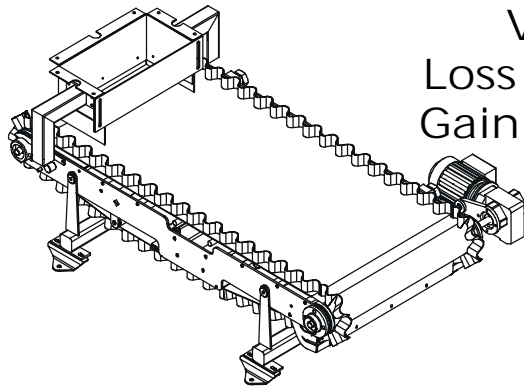
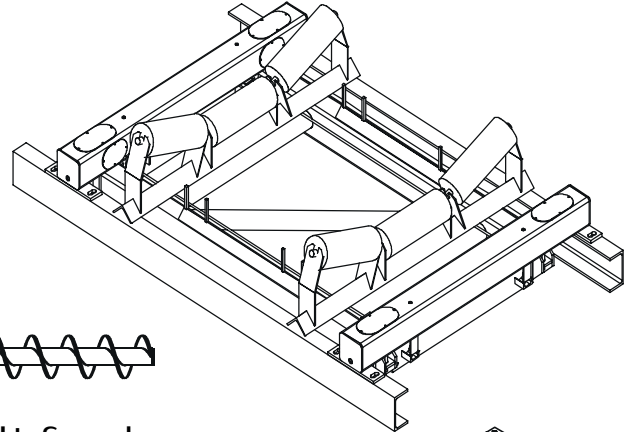
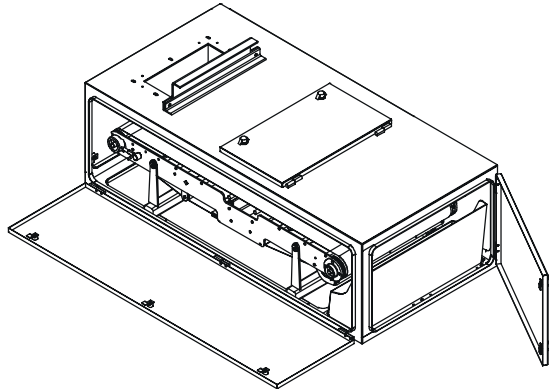
Web page
www.web-tech.com.au

BRISBANE (Head Office)
11 Electronics Street
Eight Mile Plains, QLD 4113, Australia.
Tel + 61 7 3841 2844
Fax + 61 7 3841 0005
Email webtech@onaustralia.com.au

SYDNEY OFFICE
Tel + 61 2 9757 2296
Fax + 61 2 9899 6585
Email webtech@onaustralia.com.au

MELBOURNE OFFICE
Tel + 61 3 9653 9260
Fax + 61 3 9653 9699
Email webtech@onaustralia.com.au

Web-Tech are manufacturers and designers
of :-



Weigh belt feeders
Conveyor belt scales
Loss in Weight screw feeders
Volumetric screw feeders
Loss in Weight vibratory feeders
Gain in Weight vibratory feeders

Company Profile

Web-Tech is a wholly owned Australian company, which specialise in the design and manufacture of continuous and static weighing systems for all facets of industry. Web-Tech have 15 years experience in the field of continuous weighing. Web-Tech's Head office and manufacturing works are located in Brisbane, with a sales and service office in Sydney and Melbourne.

We have a standard range of designs for equipment. Where a customer has a special requirement we will, where possible, modify our design. or design a new device to meet the application requirements.

Our feeders are currently in use with most of the major companies in Australia and our electronic systems are widely used in the U.S.A., South America and Europe.

Web-Tech is proud to include companies such as BHP Steel, BHP Minerals, BHP Temco, BHP Australia Coal, CSR Sugar & Plaster Board, Monier, Queensland Cement & Lime, Tomago Aluminium Company, Boyne Smelters Limited, Blue Circle Southern Cement, Swan, Cement, Boral, Comalco Aluminium, Incitec, Mt. Isa Mines Limited, Port Waratah Coal Services, Simplot, Uncle Bens, Kellogg (Australia & Malaysia), and SPC amongst our users.



TABLE OF CONTENTS

- 1. BELT SCALE FUNCTIONS**
- 2. THEORY OF OPERATION**
- 3. BELT SCALE COMPONENTS**
- 4. CONVEYOR DESIGN**
- 5. WHICH MODEL BELT SCALE ?**
- 6. ONGOING MAINTENANCE**

BELT SCALE SELECTION AND INSTALLATION GUIDE

The following guide has been produced as an aid in the correct selection and installation of Conveyor Belt Scales. This publication does not cover the operation of Nuclear Belt Scales

1. BELT SCALE FUNCTIONS

The requirement of a Belt Scale may be for a variety of reasons. Most applications require a Belt Scale to accurately weigh the "total" amount of material that has been conveyed from one location to another. However some applications only require the Belt Scale to accurately measure the "rate" that the material is being conveyed at , and the "total" figure is only of a secondary interest . Other applications place great emphasis on both the "total" and "rate" results.

An example of a "total" application could be a shiploading operation, where it is critical to know the actual "total" tonnes that have been loaded into each section of the ship . The ship holds can be relatively easily "topped up" to the required weight, however it is difficult to take excess tonnes back off the ship. A Belt Scale can be installed on the ship loading conveyor to continually record the "total" tonnes that have been transferred onto the ship, and thereby not have to wait for draft surveys to be carried out.

An example of a "rate" application could be a long drift conveyor transporting coal from underground to the surface. It is important not to overload the conveyor, as this may cause the conveyor to "trip" due to the excessive load. This will then require the conveyor to be shovelled off so that the conveyor can restart. A Belt Scale can be installed on the drift conveyor to measure the "rate" passing over it, which can then be used to control the rate of feed onto the conveyor .

An example of an application where both the "total" and "rate" are equally important could be a feed conveyor into a coal preparation plant. The "rate" is important as the coal feed into the plant must be maintained at a predetermined setpoint. The "total" input into the plant is important as this determines the yield or quality of the coal when compared to the amount of saleable coal that comes out of the plant. A Belt Scale can be installed on the feed conveyor to accomplish both functions

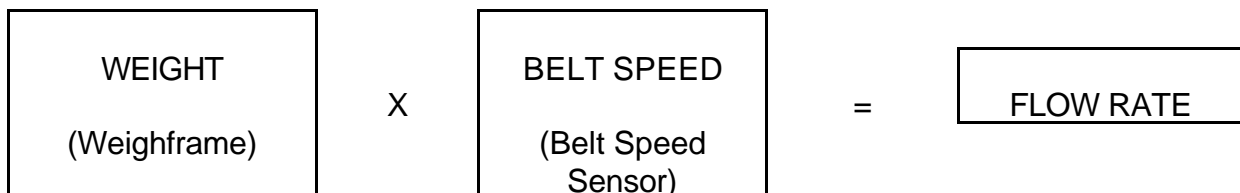
All modern Belt Scales calculate both "total" and "rate" figures which can be used for whatever purpose. Some also have additional features and options such as in-built controllers, batching facilities and rate alarms which can be used as an adjunct to the primary function. It is important when discussing the requirements of a new installation with the Belt Scale supplier, to advise him of the intended function of the system to ensure that all the necessary facilities and hardware are available. It is also important to discuss what the technical requirements may be for the interface of the Belt Scale with other equipment, such as a PLC or controller .

BELT SCALE SELECTION AND INSTALLATION GUIDE (CONT'D)

2. THEORY OF OPERATION

Belt Scales enable material to be weighed on a conveyor whilst in motion. A Belt Scale differs from a static weighing system, such as a bin weighing system, in that the Belt Scale is required to measure two variables. The first variable is the actual weight on the conveyor belt, and the second variable is the actual belt speed or belt travel. The weight of material on the conveyor belt is obtained by measuring the load on one or more idlers. This load can then be expressed in terms of kg/metre (W) of belt. The belt speed or belt travel is measured by using a device which gives an output proportional to the belt speed (S) or belt travel (T) . The flow "rate" of material passing over the Belt Scale can be expressed as:

$$\text{Rate} = W \times S$$



The "total" weight of material that has passed over the Belt Scale can be expressed as :

$$\text{Total} = W \times T$$



Belt Scale manufacturers use either the belt speed or belt travel methods depending on their design philosophy. Those that use the belt travel method generally use a low frequency device, which delivers a number of pulses per unit of belt length. The integration primarily calculates the "total" weight, from which the flow "rate" is then derived. The second method is to use a high frequency device (up to 1 kHz) , the output of which is proportional to the belt speed . The integration primarily calculates the "rate" passing over the Belt Scale, from which the "total" is then derived. Due to the availability of high-speed processors, most modern Belt Scales use the "rate" method as the basis for their electronic design.

Whilst the mathematics used by the Belt Scale electronics may appear to be relatively simple, the tasks required of the electronics are more complex. Not only must the electronics be capable of receiving and processing the signals from the weighing mechanism and belt speed / travel device, it must also be capable of the following:

- ☒ Display Rate and Total readings

BELT SCALE SELECTION AND INSTALLATION GUIDE (CONT'D)

- ☑ Provide stable power supplies to the weighing and belt speed / travel elements
- ☑ Provide analogue and digital outputs for remote equipment
- ☑ Provide Automatic Zero and Span calibration facilities
- ☑ Provide serial communications for remote computers
- ☑ Carry out "AutoZero" routines when the belt is empty
- ☑ Provide alarm functions
- ☑ Provide control functions
- ☑ Interface with the operator

The measurement of the weight on the conveyor belt and the belt speed / travel also present some physical problems which must be overcome. The accuracy of the weight measurement is dependant on a number of factors such as belt tension, belt construction, weighframe location, troughing angle and material loading. The degree of accuracy, and ways of improving the accuracy are discussed in further detail in the following sections.

3. BELT SCALE COMPONENTS

Basically Belt Scales consist of four main components. The main components are :

- i) Weighframe and associated weigh idlers
- ii) Belt speed / travel sensor
- iii) Electronic Integrator
- iv) Calibration device

i) Weighframe and Weigh Idlers

The function of the weighframe is to support the weigh idler(s) and conveyor belt, and to convert the weight of the material within the weigh span to an electrical signal, which can be processed by the electronics. Weighframes are varied in design, however the majority of the designs incorporate one or more transducers, most typically strain gauge loadcells. The weighframe is usually self contained, low profile, and designed to be installed within the limits of the conveyor structure. The number of idlers used is dependant upon the accuracy required, and the conveyor parameters. Various weighframe designs exist, each with their own perceived advantages. Most Belt Scale manufacturers use either a "**pivoted**" design or a "**fully floating**" design. With a "pivoted" design, one or more idlers are mounted on a frame, which is pivoted at one end by some form of fulcrum point. The fulcrum point is designed to be both maintenance free and as close to frictionless as possible. Early pivot designs included knife edges and bearings or ball bearings, however due to the perceived maintenance problems, and the advent of transducers with very small amounts of movement, these were replaced with components such as torque tubes, flexures or rubber trunnions.

BELT SCALE SELECTION AND INSTALLATION GUIDE (CONT'D)

The "fully floating" design comprises one or more idlers mounted on a frame, which is in turn supported at each corner by a transducer. Horizontal and transverse restrainers limit the movement of the weighframe in any direction, except that perpendicular to the belt line.

The advantages of both types of design are as follows:

PIVOTED TYPE

- * Less Expensive
- * Require less transducers
- * Can be counterweighted which allows "deadweight" of belt and idlers to be removed . Better sensitivity from the transducers
- * Less calibration weights required

FULLY FLOATING TYPE

- * Same design as used in high accuracy static weighing systems
- * Do not use pivots, which could influence measurements
- * Forces acting on weigh idlers act directly on transducers
- * Calibration weights represent the same weight regardless of where placed on weighframe

Generally speaking, "fully floating" multi idler weighframes are normally used for high accuracy weighing applications, and "pivoted" single or multi idler weighframes are used for general purpose weighing applications. However similar performance can be achieved by installing two "pivoted" weighframes in series.

Weigh Idlers

The weighframe supports the belt by means of "Weigh Quality" idlers. The differences between these idlers and standard conveyor idlers are:

- The idler rolls are "in-line" rather than "offset"
- The idler rolls are machined concentric to provide 0.13 mm Total Indicated Runout
- The idler rolls are balanced within 0.011 Nm
- The idler roll height can be adjusted

"Weigh Quality" idlers are also supplied for the two approach and two retreat idlers to the weighframe. Idler roll height is adjustable to allow for accurate alignment of the idlers within the weigh area. "Weigh Quality" idlers are available from most idler manufacturers

The following design aspects should be confirmed when considering a proposed weighframe:

- ☒ Self contained and preassembled for easy installation
- ☒ Rigidity, with great emphasis placed on eliminating deflection
- ☒ Provide minimal surface area for material build-up
- ☒ Provide equal loading on all transducers

BELT SCALE SELECTION AND INSTALLATION GUIDE (CONT'D)

- ☑ Provide maintenance free and frictionless pivot points
- ☑ Be provided with mechanical "tare" facility for lightly loaded conveyors
- ☑ Reduce the effects of material off centre loading

ii) Belt Speed / Travel Sensor

As previously discussed , a sensor is supplied to provide a signal to the electronic integrator as to the actual belt speed or belt travel .

Belt Speed Sensor

Belt speed sensors can be supplied in several arrangements. The most common method is for a "rotary" type sensor to be mounted in an enclosure to be connected to a "live" shaft pulley , usually the tail pulley . As the pulley rotates, the speed sensor shaft is also rotated, which in turn produces a pulse output. The frequency of the pulse output is proportional to the rotational speed of the pulley. Typical frequencies fall within the range of 100 - 1000 Hz . Belt speed sensors should not be connected to the drive pulley, as any slippage between the drive pulley and conveyor belt will not be measured.

A second type of belt speed sensor involves mounting a sprocket at the end of a conveyor roll , and sensing it's rotational speed with the use of a "Magnetic Pick-up" . The Magnetic Pick-up counts the number of sprocket teeth that pass by a sensing element, and therefore produces a frequency proportional to the speed. This system is not normally used on applications where the conveyor rolls are subject to material build-up, as this will change the diameter of the roll and therefore the indicated belt speed. However on some applications where the idler rolls appear to be carrying build-up, closer inspection will show that the area of idler roll in contact with the belt remains clean.

The advantages of using the idler roll / sprocket type of sensor is that they are relatively simple and robust , and can be situated close to the weighframe . When installed close to the weighframe, the belt speed being measured is the actual belt speed at the weighframe.

A third type of system still popular with some manufacturers / customers is the use of a pivoted "trailing" arm with a wheel in contact with the return belt. The wheel is attached to a rotary sensor similar to that used with the tail pulley method. The disadvantages of this method are:

- ☑ The wheel is prone to bounce when a disturbance in the belt surface such as a splice passes under it . This will cause a variation in frequency output, and therefore the measured belt speed.
- ☑ The wheel is usually mounted on the return belt adjacent to the weighframe. This can be a long distance away from the weighframe (by belt travel), and therefore the belt speed measured may not be the same belt speed at the weighframe.

BELT SCALE SELECTION AND INSTALLATION GUIDE (CONT'D)

Belt Travel Sensor

A belt travel sensor usually consists of one or more "flags" welded to a pulley, usually the tail pulley, and a proximity probe. As the flags pass by the proximity probe they are counted, and this relates to the amount of conveyor belt that has passed around the pulley. The advantage of this type of system is that it is relatively simple and robust, however the disadvantage is that it is low frequency in output, and therefore the resolution can be coarse

iii) Electronic Integrator

The electronic integrator is designed to carry out the following basic functions:

- ☒ Provide supply voltages to weighframe transducers and belt speed / travel sensors
- ☒ Measure and integrate the instantaneous weight on weighframe and instantaneous belt speed / travel which calculates the "Mass Rate" and "Mass Total" passing over the conveyor
- ☒ Provide analogue and pulse outputs for remote equipment
- ☒ Provide facilities for calibration

The electronic integrator may also provide the following options:

- ☒ Provide P.I.D. control output
- ☒ Provide serial communications for remote computers
- ☒ Provide Rate alarm outputs
- ☒ Provide batching facilities

Most modern integrators are microprocessor based with computing power similar to a personal computer. Each manufacturer engineers their own software, which incorporates their own design philosophies. Whilst all integrators may look similar at first glance, the methods used by the various manufacturers to achieve the end-result, can vary significantly. The current "state of the art" integrators are designed to make operation / calibration easier for site personnel, and great emphasis should be placed on the ease of use. Many sites will prefer the Belt Scale supplier to carry out routine maintenance and calibration, however in an emergency-situation, there is nothing worse than having to wade through a manual, attempting to understand what a displayed code means.

Integrator Location

The electronic integrator does not have to be located adjacent to the weighframe. Some customers may wish to mount the integrator in a nearby motor control centre or in a control room. Whilst this is possible the following points should be considered when selecting the location:

- The weighframe transducers produce very low voltage levels and therefore if long cables are used voltage drops may occur
- The longer the cable run, the greater the chance of picking up electrical noise on the cables

BELT SCALE SELECTION AND INSTALLATION GUIDE (CONT'D)

- Long distances between weighframe and integrator increases the time required when carrying out calibrations
- Is the proposed area classified as Dust Ignition Proof or Hazardous?

It is Web-Tech's belief that the best location for the integrator is adjacent to the weighframe where possible. The output signals can be used to provide information to remote equipment.

The integrator should be mounted so that it is free from vibration, not subject to direct sunlight and rain. If installed outdoors it is suggested that rain / sun hoods are used.

When selecting a Belt Scale system, the following integrator features should be investigated

- ☒ Are the operation/calibration functions displayed / entered in plain English or in code form?
- ☒ Is the circuit design truly digital or does it require potentiometer adjustments in it's setup?
- ☒ Are service and fault finding functions available?
- ☒ Does the integrator maintain it's accuracy over a wide temperature range, typically 0 to 40° C
- ☒ Are the analogue and pulse outputs "isolated"?
- ☒ Is the integrator enclosure suitable for the environment?
- ☒ Does the system provide Automatic zero and calibration facilities?
- ☒ Are the integrator outputs compatible with remote equipment?
- ☒ Is the integrator supplied with filters on the mains input?
- ☒ Can the integrator be easily serviced?

iv) Calibration Device

There are basically four methods that can be used to calibrate a Belt Scale system.

- Material Test
- Calibration Chain / Train
- Static Calibration Weights
- Electronic Simulation

Material Test

A material test is the best form of test that can be done. The test involves collecting an amount of material that has passed over the Belt Scale, and weighing it on an accurate static weighing system such as a weighbridge or bin weighing system. Other methods of testing simulate material loading, however only a material test duplicates the actual operating conditions of the conveyor. With regard to the amount of material required for a test, a general rule of thumb is a test of 10 minutes duration.

When considering the installation of a Belt Scale system, a method of diverting material from the process should be investigated. It is essential when carrying out a material test that it can be guaranteed that all of the material that has passed over the Belt Scale has been collected.

BELT SCALE SELECTION AND INSTALLATION GUIDE CONT'D

Calibration Chain / Train Test

A calibration chain / train is a device that sits on the conveyor belt above the weighframe and approach and retreat idlers, is restrained in position whilst the conveyor is run, and simulates material loading. A calibration chain consists of a series of interconnected steel rolls, which is manufactured to represent approximately 80 % of the maximum belt loading. A calibration train is similar to a chain, except that it consists of a series of interconnected carriages, which can be loaded with weights to simulate various belt loadings. The disadvantages of calibration chains / trains are as follows:

- ☒ They are generally expensive, sometimes more expensive than the Belt Scale they are testing
- ☒ They require additional personnel to set up
- ☒ They have to be stored above the conveyor and therefore a storage structure has to be built
- ☒ They require maintenance

Static Weight Test

Static weight tests are the most common form of testing carried out on Belt Scales. All Belt Scale manufacturers offer calibration weights as an option with the system, the weight and quantity sized to approximate 75 - 80 % of maximum belt loading. The calibration weights are applied directly to the weighframe, the belt is run, and material loading is simulated. The advantages of this method are as follows:

- ☒ They are generally the cheapest method
- ☒ They can be applied by one person, and for high belt loadings, permanent weights that can be jacked on / off the weighframe can be installed
- ☒ If a material test can be initially carried out, they can be referenced to the material test results
- ☒ Repeatability tests are easy to carry out

The disadvantages of static calibration weights are as follows:

- ☒ They cannot exactly duplicate the running conditions of the conveyor
- ☒ They sit directly on the weighframe, and therefore do not duplicate the belt effects
- ☒ They tend to be lost

Electronic Simulation Test

Electronic Simulation tests are carried out without the use of weights, material or chains. When the test is initiated, a "shunt" resistor is applied across the transducer input, which creates an offset. The value of the resistor is usually calculated to represent approximately 75 - 80 % of maximum belt loading. A test value is initially established at the time of commissioning, which can then be used to check the repeatability of the system.

BELT SCALE SELECTION AND INSTALLATION GUIDE (CONT'D)

This method of testing does not obviously take into account the belt effects or conveyor running conditions. Web-Tech provides this method of testing as a standard feature, however we do not place great emphasis on it's use.

4. CONVEYOR DESIGN

Conveyors are designed to transport material from one location to another, and not specifically for the benefit of a Belt Scale. A Belt Scale is often an after thought, and therefore the conveyor design may be less than ideal for accurate and repeatable results. The following is a summary of recommended conveyor design.

Weighframe Location

The weighframe should be located in a position where the belt tension and belt tension variations are minimal. Generally speaking this location is at the tail end of the conveyor at the loading point. However sufficient distance from the loading point should be provided to allow the material to be settled, and be travelling at the same velocity as the belt. Typically for most products, this is approximately 5 idler spacings or 6 metres.

Conveyor Inclination

Ideally the conveyor would be horizontal to provide for more consistent belt tensions, however this is not generally practical. The conveyor inclination angle should not be so great as to allow the product to roll back. This will cause a positive error from the Belt Scale

Concave and Convex Curves

Concave curves should be avoided where possible. The weighframe should be located as far away as possible from the tangent point of the curve, and no closer than 20 metres. Convex curves are less of a problem, however the weighframe should be located no closer than 6 metres from the tangent point of the curve.

Conveyor Take-up

The conveyor should preferably be fitted with gravity take-up on the return belt. Gravity take-ups located on the tail pulley are acceptable, however less desirable. Screw take-ups on short conveyors (less than 15 metres) may be acceptable, however not preferred.

Belt Loading

Belt loading should be uniform and consistent. Belts should be sized so that they are volumetrically 75 - 80 % full.

BELT SCALE SELECTION AND INSTALLATION GUIDE (CONT'D)

Belt Type

The selected belt type should use the minimum number of plies possible. Additional plies add to the stiffness of the belt and therefore reduce the achievable accuracy. Steel cored belts are the least desirable due to the stiffness of these belts. Conveyor belts should be uniform in weight, with a minimum of splices. Metal clip fasteners should not be used.

Belt Tracking

Belt tracking should be central to the idlers regardless of belt loading. Training idlers should not be used any closer than 5 idler spacings from the weighframe.

Conveyor Idlers

It is more desirable to use idlers with shallow troughing angles. Idlers with 20° angle are better than 30° angle, and 30° is better than 35°. Idlers with 45° troughing angle can be used, however errors due to belt tension changes are more significant. The steepness of the troughing angle determines the planar moment of inertia of the belt, which determines how susceptible the Belt Scale is to belt tension variations and misalignment.

Idlers on the weighframe, two approach and two retreat idlers should be:

- ☒ In-Line "Weigh Quality"
- ☒ Rolls should be machined concentric to provide 0.13 mm Total Indicated Runout
- ☒ Rolls to be balanced within 0.011 Nm
- ☒ Rolls to be fitted with some form of height adjustment

On some low accuracy applications, some of the above requirements may not be required .

Idler Alignment

The mechanical alignment of the weigh, approach and retreat idlers is critical. The height misalignment in this area should be no greater than 0.4 mm. Mechanical misalignment of these idlers will cause the accuracy of the system to vary depending on belt tension variations. It is advisable to have the Belt Scale supplier assist in the mechanical installation

Conveyor Stringers

The conveyor stringers should be rigid, free from vibration and capable of supporting the load without deflection. Weighframes and approach / retreat idlers should not be installed where joins in the stringers exist. If this is not possible, stringers should be welded together using "fish" plates. The stringers should be suitably supported in the area of the weighframe / approach / retreat idlers so that the total deflection within the weigh area does not exceed 0.25 mm.

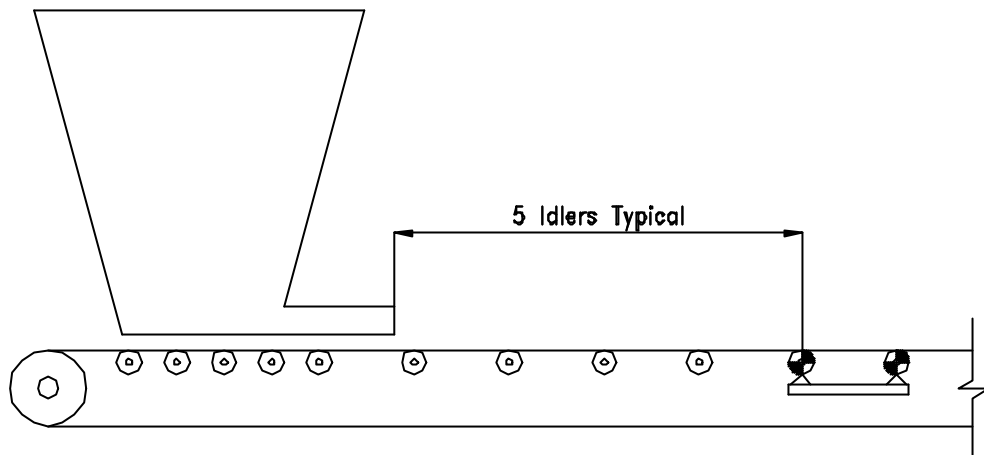
BELT SCALE SELECTION AND INSTALLATION GUIDE (CONT'D)

Environmental Protection

Where the conveyor is exposed to the elements, errors may be induced by external influences such as wind. Errors equivalent to 30 tonnes per hour have been measured on large conveyors subject to high wind velocities. These errors can be minimised by installing guards, which protect the weighframe and 5 metres of conveyor in each direction.

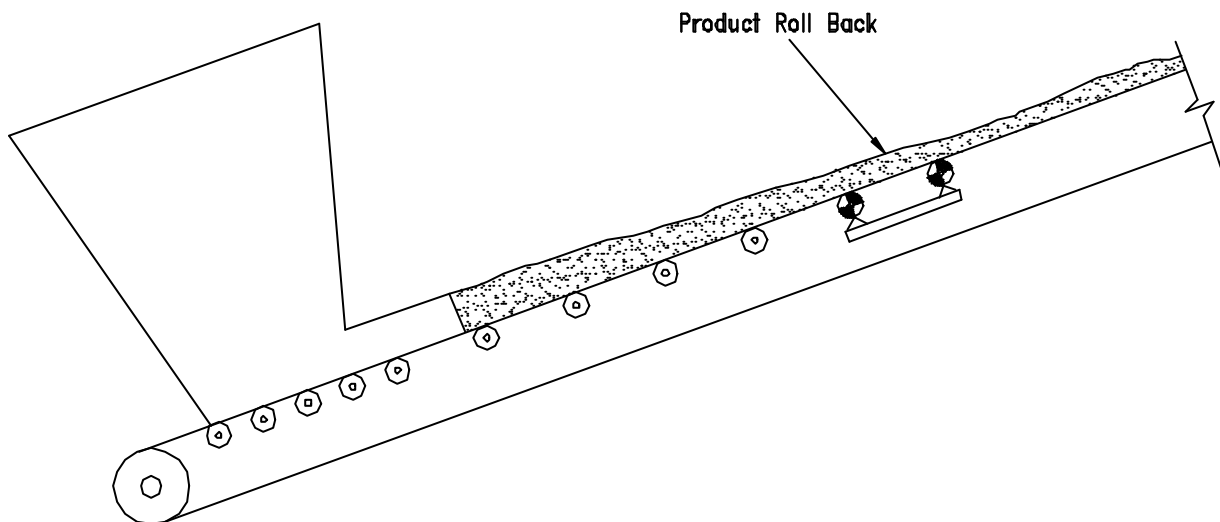
Where possible, supply the Belt Scale manufacturer with a detailed arrangement drawing of the proposed installation with as many parameters as known .

WEIGHFRAME TO LOADING POINT DISTANCE



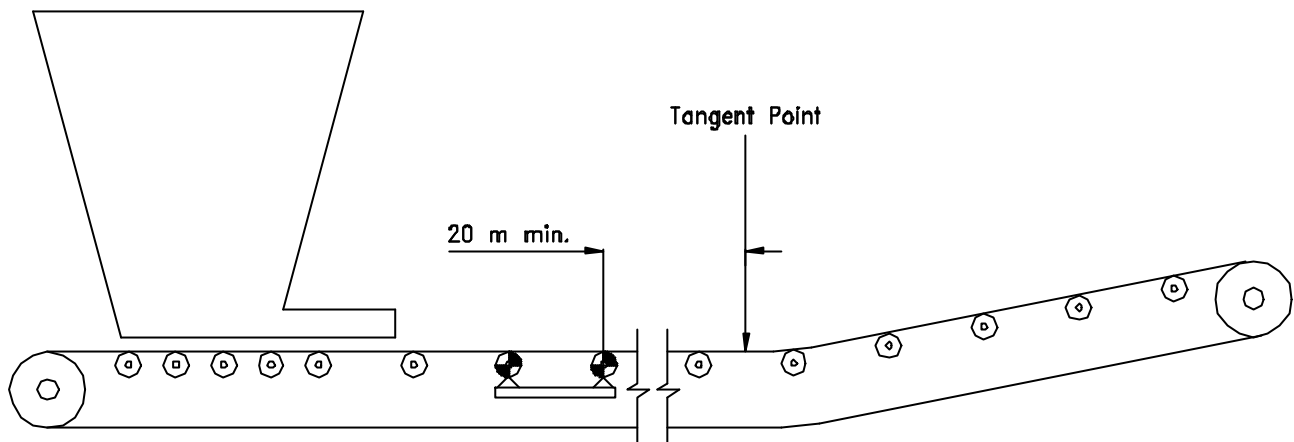
The weighframe should be located far enough from the loading point to ensure that the material has achieved the same velocity as the conveyor belt . Typically most materials will settle within 5 idler spacings of the loading point .

MAXIMUM CONVEYOR INCLINATION ANGLE



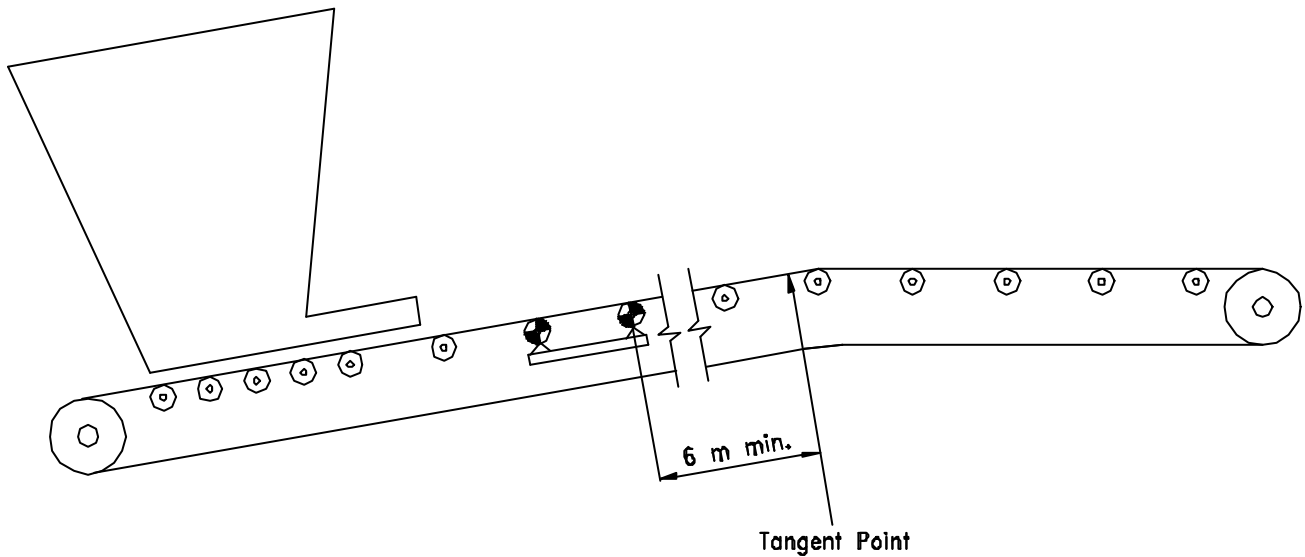
The conveyor incline angle should not so steep as to allow the material to be able to roll back on itself .

CONCAVE CURVES



The minimum distance between the last weigh idler on weighframe and the tangent point of the curve should be no less than 20 metres and preferably 30 metres if possible .

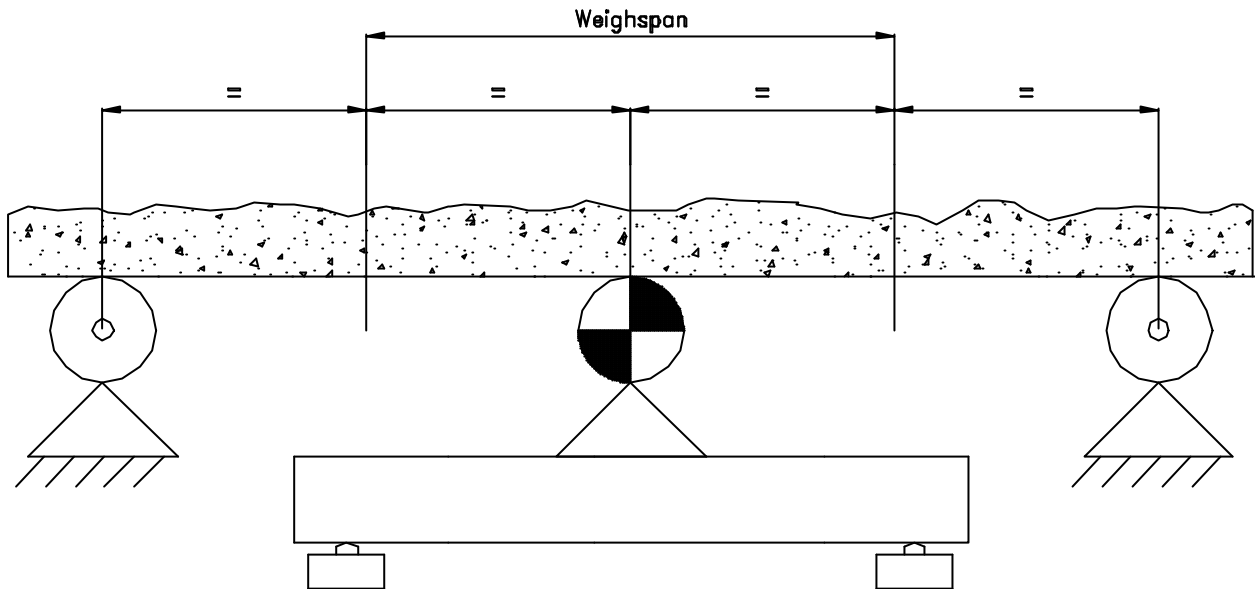
CONVEX CURVES



The minimum distance between the last weigh idler on weighframe and the tangent point of the curve should be no less than 6 metres .

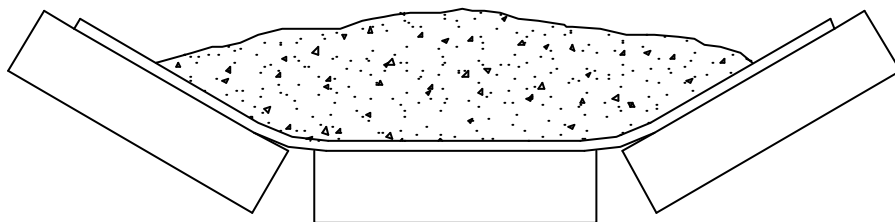
WEIGHFRAME LOCATION - CONCAVE AND CONVEX CURVES

WEIGHSPAN



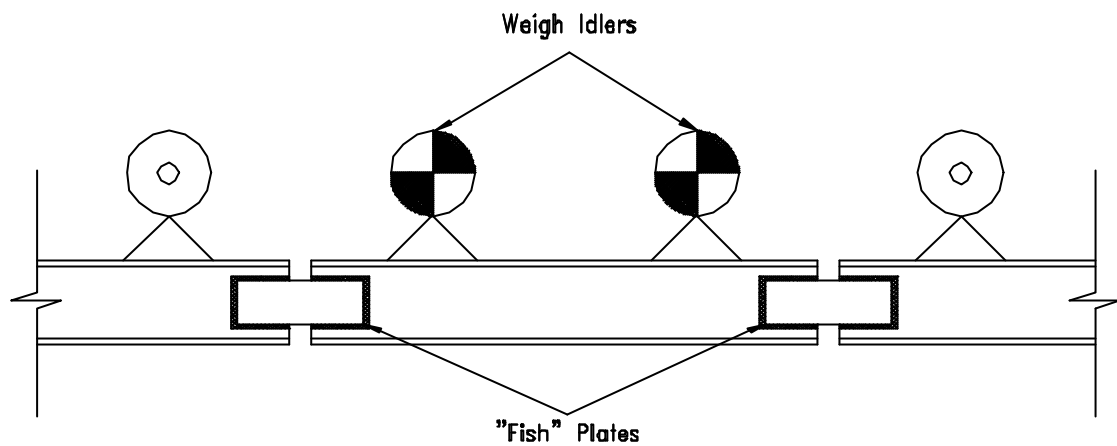
The amount of belt that the weighframe weighs is called the "weighspan" .
The weigh idler(s) share half of the load with the adjacent fixed idlers .

BELT LOADING



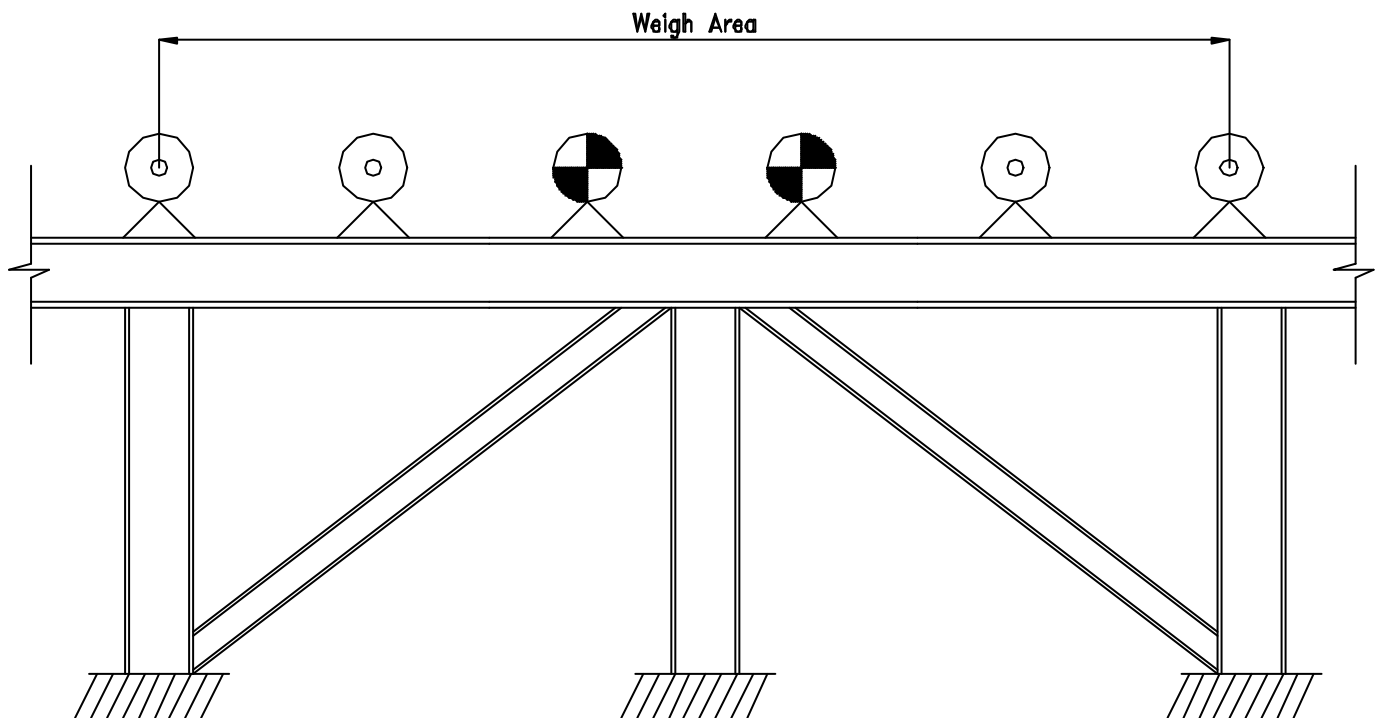
When sizing conveyors , the belt should be 75–80% volumetrically full .

CONVEYOR STIFFENING



Install weighframe and at least one approach and one retreat idler on the same section of conveyor stringer . Where this is not possible , weld "fish" plate(s) between conveyor joints to prevent movement .

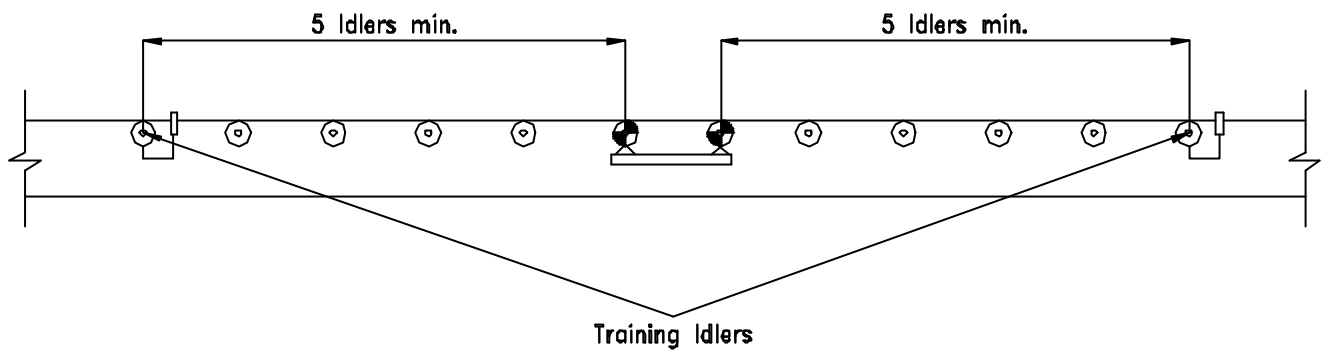
CONVEYOR SUPPORTS



Ensure that conveyor structure is adequately supported within the Weigh Area .

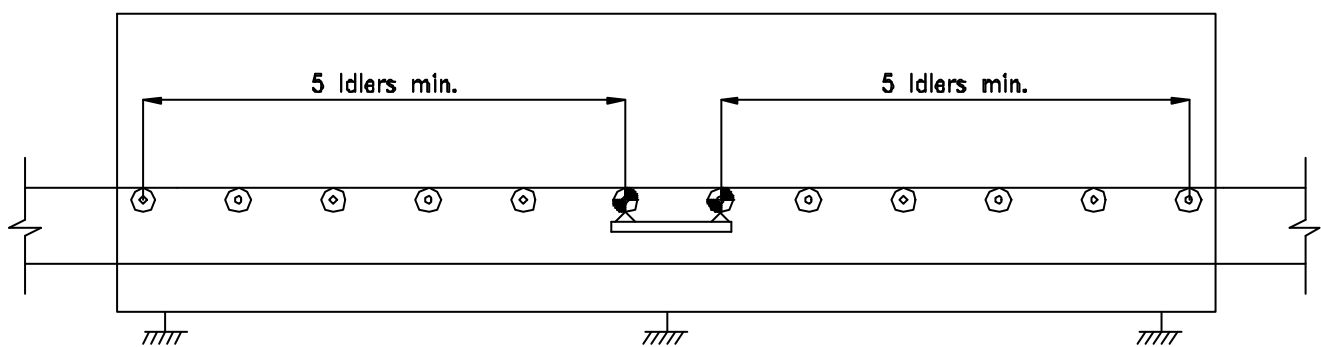
Total deflection under full load should not exceed 0.25 mm .

TRAINING IDLERS

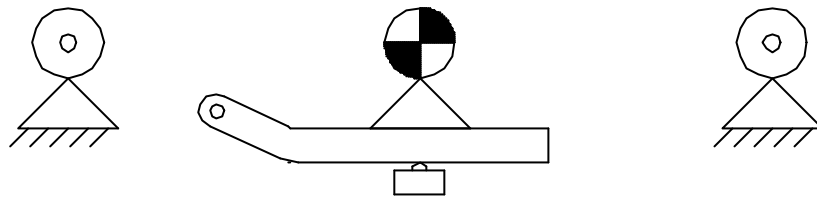


It is preferable not to locate tracking idlers within the weighframe area . Tracking idlers should be no closer than 5 idler spacings from the weighframe .

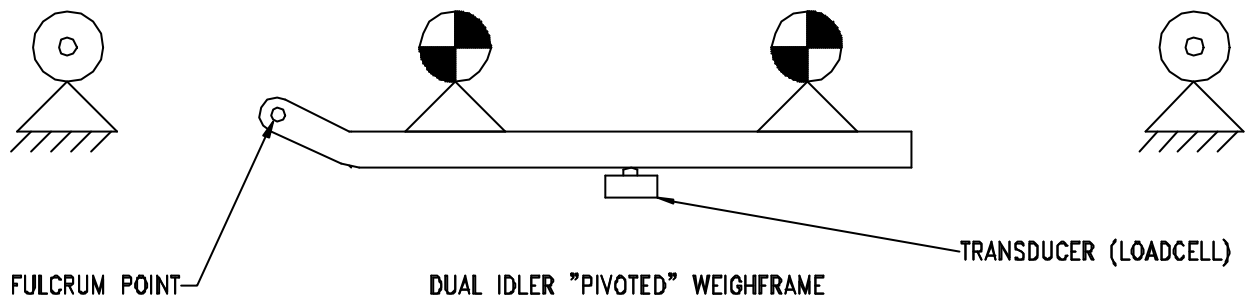
WIND GUARDS



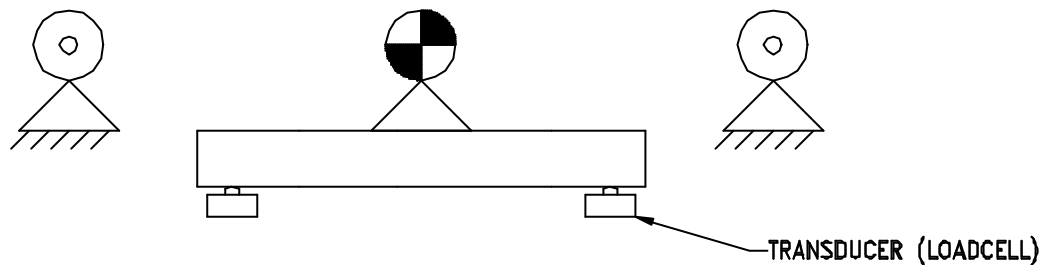
External Influences such as wind can effect the accuracy of the Belt Scale . Wind guards should be installed for at least 5 idlers either side of the weighframe where necessary.



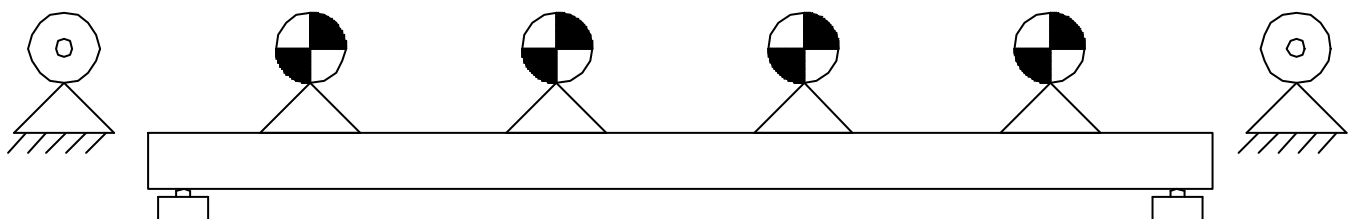
SINGLE IDLER "PIVOTED" WEIGHFRAME



DUAL IDLER "PIVOTED" WEIGHFRAME



SINGLE IDLER FULLY FLOATING WEIGHFRAME



MULTI IDLER "FULLY FLOATING" WEIGHFRAME

VARIOUS WEIGHFRAME CONFIGURATIONS

BELT SCALE SELECTION AND INSTALLATION GUIDE (CONT'D)

5. WHICH MODEL BELT SCALE ?

Most Belt Scale manufacturers can supply a number of different model weighframes and electronics. Some models may appear to duplicate each other in regard to accuracy specifications and general features. For example, two different model weighframes may be specified at an accuracy of $\pm 0.5\%$. However one model may be designed for medium duties with relatively light belt loadings and the other for heavy-duty applications with high belt loadings. When you examine the construction of the weighframe, will it stand up to the duty?

The accuracy of the system will be determined by the weighframe type, as the same model electronics will normally be used regardless of the accuracy requirements. More than one model electronics may be available, however this is generally because they offer various options. When specifying a desired accuracy for the Belt Scale system, the application should be investigated thoroughly. Like most equipment, the higher the accuracy specified the more expensive the system will be.

Belt Scale accuracy depends on a number of factors such as belt tension, belt type, location and belt loadings. However they are usually categorised into one of three groups.

SINGLE IDLER	General purpose process scales, with typical accuracies in the order of 1 % to 3 %.
DUAL IDLER	Inventory purpose scales with typical accuracy of 0.5 %.
MULTI IDLER	High precision systems such as shiploaders and scales for payment purposes. Accuracy typically 0.25 %.

However in some applications it may be necessary to use a four idler weighframe to achieve 1% accuracy. On other applications, a single idler weighframe may achieve 0.5% accuracies. The Belt Scale supplier will require certain information regarding the application, which should be detailed on their "Application Data" sheets. It may be preferable to allow the supplier to review the data and advise what options are available in regard to the possible accuracy versus the costs, rather than specifying the accuracy.

BELT SCALE SELECTION AND INSTALLATION GUIDE (CONT'D)

6. ONGOING MAINTENANCE

Many Belt Scale installations are ignored until a problem exists. Like all equipment a minimum of maintenance will assist in providing long-term reliability. For multiple installations at the one site it may be worth contracting the Belt Scale supplier to carry out the maintenance and regular calibrations. These visits can also be used to provide basic training for the site personnel in the event of an emergency breakdown situation. These site visits are normally scheduled at three monthly intervals.

The following work should be carried out on a regular basis:

- ☒ Clean down of build-up on weighframe and removal of spillage
- ☒ Inspection and cleaning of idler rolls
- ☒ Zero calibrations
- ☒ Inspect belt tracking
- ☒ Inspect belt wear

The following work can be carried out less frequently:

- ☒ Span calibrations
- ☒ Check mechanical alignment
- ☒ Balance transducers (where necessary)
- ☒ Check cabling and junction boxes

Apart from the general housekeeping of the installation, the other important aspect that should be addressed is the record keeping for each installation. Most modern Belt Scale electronics store all data in battery backed or non-volatile memory, however in the case of catastrophic failure this data will probably be lost or not accessible. At these times it is essential that accurate records be available for reprogramming purposes. Accurate records also allow review of the Belt Scale performance and possible problems that may require attention.

Belt Scale suppliers will usually be able to provide proper data record sheets that can be used in conjunction with the maintenance program.

MODEL WTS2S2 MECHANICAL INSTALLATION

The model WTS2 Series II weighframe is a dual idler, dual loadcell, fully floating design. The mechanical installation comprises the following work:

- Lifting of conveyor belt in proposed weighframe location
- Installation of weighframe and support beams
- Installation of Weigh idlers on weighframe
- Installation of approach and retreat idlers
- Aligning the height of the weigh, approach and retreat idlers.

Refer to drawings. WTS2S200 & WTS2S210 for installation general layout.

Weighframe Location

The weighframe location may have been previously nominated after discussions with Web-Tech. If not refer to the "Belt Scale Installation Guide" section of this manual for guidance, or contact Web-Tech to confirm the position.

BEFORE CARRYING OUT ANY WORK ON THE CONVEYOR, ISOLATE THE CONVEYOR DRIVE AS REQUIRED.

Lifting of Belt

The conveyor belt (if fitted) will be required to be lifted off the idlers in the area of the installation. The belt should be lifted so that access is available for approximately 5 metres either side of the weighframe centre. The belt should be lifted approximately 600 mm above the idlers, and the belt should be lifted by means of placing pipe or timber under the belt, which will keep the belt flat. If the conveyor is fitted with a gravity take-up, it will be necessary to lift the take-up weight first. Ensure that the belt is supported securely before commencing any work.

Weighframe Installation

The weighframe is robust in design, however care should be exercised when lifting and installing it into position. The weighframe should be lifted with web slings, do not use chains.

1. If standard idlers already exist, remove six sets from the conveyor.
2. Mark out the centre of the space created, and this will be the centre of the weighframe.
3. Remove the weighframe from the packing crate. Note the proper orientation of the weighframe. The crossbeam that houses the loadcells should be at the bottom of the conveyor (if inclined).
4. Lift the weighframe into the conveyor so that the weighframe mounting feet are sitting on the stringers. Position the weighframe so that the centre of the weighframe is in line with the previously marked out centre of the space.
5. Measure and mark the centre of the centre (horizontal) roll on the first of the existing idlers in each direction. Tie a stringline between these centre points.
6. Measure and mark the centre of the weighframe crossbeams. Square the weighframe up so that the centre of the crossbeams are in line with the stringline.
7. Mark out the position of the weighframe mounting holes on the conveyor stringers. Drill 18 mm holes, for M16 bolts. Install bolts, washers and nuts and tighten down. Ensure that spring washers are used.
8. Locate two of the In-Line Weigh Quality idlers. Sit the idler frames across the weighframe on the idler mounting plates. Install centre rolls into the idler frames (wing rolls not required at this stage). Ensure that grub screws in roll shafts are not protruding from the bottom

MODEL WTS2S2 MECHANICAL INSTALLATION

of the shaft. Measure and mark the centre of the centre roll face.

9. Position the idlers so that they are:

- In line with the stringline
- Are dimensionally layed out as shown on the installation drawing

When the idlers are positioned correctly, the idler base is to be welded to the mounting plates on the weighframe.

NOTE: THE LOADCELLS ARE PRE-INSTALLED IN THE WEIGHFRAME AND COULD BE DAMAGED BY IMPROPER WELDING PRACTICES. ENSURE THAT WELDING EARTH STRAP IS CONNECTED AT THE POINT OF WELDING.

10. Locate the remaining In-Line Weigh Quality idlers, and sit frames across the conveyor stringers, with two sets upstream and two sets downstream of the weighframe. Install centre rolls in these frames. Measure and mark the centre of the centre roll face on these idlers.

11. Position the idlers so that they are:

In line with the stringline
Are dimensionally layed out as shown on the installation drawing

12. Mark out mounting holes on stringers and drill holes to suit the idler mounting feet. Install bolts, washers and nuts and tighten down. Ensure spring washers are used.

13. Re-check idler spacing and centres. Adjust if necessary.

14. Run a further two stringlines (30 lb fishing line) from the same existing idlers as the centre line was tied off to. The stringlines should be approximately 12 mm in from each edge of the roll.

15. Carefully lower the weighframe shipping bolts so that the weighframe now sits on the loadcells.

16. Go to the first in-line idler (shown as +C2). Place a spirit level across the top of the centre roll. Adjust the idler roll using the grub screws, so that it is level. If the amount of adjustment required is more than approximately 5 mm, it is better to use a packer under the idler mounting foot.

17. Go to the last in-line idler (shown as -C2) and level centre roll.

18. The in-line idlers should be higher than the existing offset idlers due to their design. The levelled centre rolls should already be in contact with the two stringlines at the edge of the rolls. The in-line idlers should **never** be lower than the standard existing idlers. If they are, they will require packers to be installed under all mounting feet.

19. The two reference stringlines should be clear of the centre rolls in the other idler frames (+C1, W1, W2 & -C1). If not, adjust the grub screws on +C2 and -C2 idlers by equal amounts until both stringlines are clear of all centre rolls. When this has been completed, ensure locknuts are tightened. Permissible tolerance is +0.4, -0.0 mm.

20. Proceed to adjust the remaining centre rolls until they just touch the stringlines. Ensure all locknuts have been tightened after adjustment. After all rolls have been adjusted, recheck all rolls are still in contact with the stringlines.

21. Locate the remaining idler rolls and install all wing rolls. Ensure that grub screws in roll shafts are not protruding from the bottom of the shaft.

22. Run a further two string lines on both sides of wing rolls similar to the centre rolls.

MODEL WTS2S2 MECHANICAL INSTALLATION

23. Starting on one side of wing rolls, the same procedure is required to be carried out as the centre rolls. Adjust the wing rolls on +C2 and - C2 idlers evenly so that they are clear of all remaining wing rolls.

24. Go through and adjust all rolls so that they are just touching the stringlines. When this has been completed, ensure that all locknuts are tightened. Permissible tolerance is +0.4, 0.0 mm.

25. Review all adjustments, and if satisfied, remove all stringlines.

26. Carefully lower the conveyor belt. **Do not drop the belt onto the weighframe.**

BELT SPEED SENSOR - ENCODER

DESCRIPTION

The belt speed sensor supplied with the belt scale is a digital incremental encoder. It produces a square wave output, the frequency of which is proportional to the belt speed.

The encoder should be connected to a non-driven pulley ie not a drive pulley. This is because there could be some slippage between the drive pulley and the belt. The encoder is typically connected to the tail pulley or a “snub” pulley.

The encoder is available in the following models:

100 PPR
200 PPR
500 PPR

The model supplied for your application has been based on the belt speed, and pulley diameter information that was provided. For slower belts, an additional pulse multiplier board may be supplied. This board is located in the belt speed sensor junction box. It allows the pulses from the encoder to be multiplied X1, X2 or X4. The frequency range is typically 80 to 500 Hz.

MECHANICAL INSTALLATION

The installation of the encoder can be either by direct connection to the pulley shaft using a solid coupling, or on a separate bracket and spring coupling.

If using a solid coupling, the encoder must use a restraining arm, which is in contact with a fixed part of the conveyor. This will prevent the encoder from rotating with the pulley shaft.

If using the spring coupling method (most common), the spring coupling alignment must be within 1 mm in all axes. If the coupling is not correctly aligned, it will eventually break. Provision must be made so that if the pulley position is changed, the encoder bracket can

also be moved to maintain accurate alignment.

See drawing “WT-5013” in the drawing section of the manual to see typical installation arrangements.

ELECTRICAL INSTALLATION

The encoder is provided with a three (3) core cable approximately 1 metre long. Therefore the belt speed sensor junction box must be installed within its reach. The cable should be mechanically protected.

Refer to drawing “Tach-1” for termination details.

PART NUMBERS

The part number(s) for the encoder include the PPR output of the encoder. The typical P/No. is “WXT-XXX” where “XXX” is the PPR. Therefore a 100 ppr encoder would have the P/No. “WXT-100”.

KEYBOARD LAYOUT AND KEY FUNCTIONS

MASTERWEIGH 5 KEYBOARD LAYOUT

TOTAL RESET	1	2	3	4
ZERO	5	6	7	8
CAL	9	0	C	MENU
	-	./+	A ABORT	E ENTER

Masterweigh 5 can operate in a protected security or open mode depending how the user has configured it. See "Security" for set up details. The following text assumes that the operator has gained access to the system.

SECURITY CODES

If a user has entered security codes into the Masterweigh 5, entry to the menus will be restricted. (Two four-digit codes will have been entered – see Menu 15 for details).

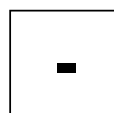
One code (low level) allows the code holder limited access to any data in the menus, for inspection only. The other code (high level) is needed for access to menus and to make modifications to constant, start calibration sequences, etc. Note that no access is given if no code is entered.

If security codes have been activated, on pressing the Menu key, the computer waits for the four-digit code. If no attempt is made to enter a code then the display returns to MRMT format after 30 seconds. If an invalid code is detected, the display returns to MRMT format immediately. If a security code is detected then limited or complete access is gained to the menus, as appropriate. Once the menu format is exited the code will have to be re-entered for further access.

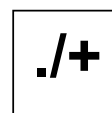
KEY FUNCTIONS



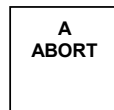
This key switches between the main display mode showing "Mass Rate/Mass Total" (MRMT) and the "Menu" mode.



AND



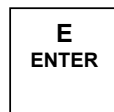
When in "Menu" mode, pressing the (+) or (-) key once will go forward or backward one menu entry. If either key is held down, the menu changes will repeat at a rate of approx. 5 per second. When entering the data, the (./+) key is the decimal point.



When in the "Menu" mode and entering changes or new data, this key enables the user to abort the changes and restore the existing entries. The top level menu screen is then displayed.



Similar to "Abort", except that the current screen data only is cancelled and the existing entries restored. The display remains at the current screen.



In menu mode, the key accepts the default setting or confirms any data entered and moves to the next level in the operating sequence.

In MRMT display mode, if the "Enter" key is pressed, the current CPU (central processor unit) status is displayed and also the number of times the CPU has been restarted.

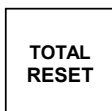
KEYBOARD LAYOUT AND KEY FUNCTIONS (Cont'd)

If the display is flashing, the CPU fault status may be viewed by pressing the enter key in the MRMT display mode.

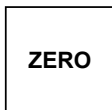
NUMERIC KEYS

These keys are used to enter calibration data.

SPEED KEYS



When this key is pressed MW5 clears the accumulated mass total.



Pressing this key takes the operator directly to the belt zero function without having to scroll through the menu structure.



When this key is pressed, the operating display jumps to the fixed weight calibration function, ready to span the system.



The blank key has been deliberately left in this condition, as it is a key that will be assigned to user's requiring special functions. (ordered as option). However, if no options are required this key provides the user with a method of switching on and off the displays back lighting. The action of this key overrides the normal timed function of the backlighting. That is under normal operating conditions the back lighting will automatically switch off 5 minutes after the last keypad operation.

MENU 1 – PARAMETER SET UP

Menu 1 is used firstly to enter the maximum capacity of the weigher and the precision of the remote counter pulse.

1

Menu Entry 1
Parameter Set Up

2

Current capacity = 1000.000 tonnes/hour
Enter new capacity? 0.000

3

Mass total increment=1.000 tonnes
Enter new inc. (10 -- 0.001)? 0.000

4

Remote totaliser pulse width =100ms
Enter new value? (20 - 1000) 0

Menu 1 can also be used to access and modify the precision zero reference and reference voltage, by pressing the "C" key. It is advisable however not to adjust this data unless the unit has been reconfigured.

5

Menu Entry 1
Parameter setup

6

WARNING: Calibration data.
Do not modify -- Press A to continue

7

Calibration zero = x.xxx milli-volts
Enter new zero ref.? 0.000

8

Precision ref. = x.xxx millivolts
Enter new precision ref. ? 0.000

9

Press E for Rate O/P span calibration
else press A

10

Rate O/P = x.xxmA
C for next. E to reset unit

1. At Menu Entry 1, press Enter to examine or modify the maximum capacity of the weigher the precision of the remote counter pulse or the remote counter pulse width.

2. At this step, the current feeder capacity is displayed. A new value may be keyed-in, then press Enter to continue. Otherwise press Enter with no data entry to retain existing values and continue. This value sets the 100% point for the 4-20mA mass rate output signal. Note that the system can measure mass rates above this value (assuming the instruments remain within their normal operating range), and higher values will be shown on the screen and totalised. However, the 4-20mA mass rate output signal will show 20mA for all mass rates above this value.

Note that units can be changed to tons, lbs, or kg if preferred, within Menu Entry 11.

3. This step displays and allows alteration to the mass total increment. This increment is used for both the mass rate and the mass total displays. Enter the new value required and press the Enter key. No change is made if Enter is pressed without data entry. Note that the increment set is the increment required to cause one pulse output from the electronic counter. Also, do not change the increment in normal operation, as the change in setting will invalidate any existing accumulated mass total.

4. This step displays and allows alteration to remote counter pulse width, this value is limited to between 20ms and 1000ms. Note the value entry should be in multiple of 10ms, ie: 20,30990,1000. No change is made if Enter is press without data entry. . One pulse is output each time the mass total increases by one increment (as set in step 3 above).

MENU 1 – PARAMETER SET UP (Cont'd)

Enter a pulse width that will match with the remote counter response time, but keep the following in consideration when selecting this value : The pulse output can go no faster than the value you just selected, but the accumulation of the mass total may, and so the remote totaliser will fall behind the actual mass total. E.g. if the pulse width is set to 100mS, then at it's fastest rate, the output will on for 100ms, then off for 100ms. This will give a maximum output of 5 complete pulses per second (100mS on and 100mS off = 200mS per total pulse). Therefore, if the feeder is running faster than 5 increments per second (= 18000 increments per hour), then the remote total will be wrong. E.g for an increment value of 0.01tonnes, the limit will be 180tph.

To modify factory calibration data:

5. At Menu Entry 1, press the "C" key to gain access to the factory calibration data. The correct values for these calibration constants have been engraved onto the main board of the Master Weigh 5 stack (the top board). Check that the values in the computer are the same as the engraved values, and modify the values in the computer as required.

6. (The display will warn the operator not to modify data and to press A to exit and continue) Press the "E" key at this point for access to the Zero Reference.

7. Enter new data and/or press the "E" key to proceed. Now access to the precision reference has been gained. Enter new data and/or press the "E" key again.

8. Either exit at this step by pressing the "A" key, or press "E" to access the menu which exercises the 4-20mA output.

9. Press "C" to step through the Rate O/P's to the desired value namely: 20.0, 10.04, 5.02, 7.53, 6.27, 5.645, 5.335, 5.178, 5.099, 1.790mA. Press "E" to reset unit. (A current meter needs to be connected across pins 6 & 7 of J3 and in series with the load if connected).

MENU 2 PULSES PER BELT REVOLUTION

This calibration is carried out with the belt moving. The number of complete belt revolutions over a time period are counted by the operator, and the Masterweigh counts the pulses returned from the speed sensor device. The revolutions are then entered using the keypad and the pulses/rev calculated by the Masterweigh and then saved.

To enable the revolutions to be counted, a point on the belt should be marked with paint, and a suitable point on the framework chosen close to the belt. The count is then started as the belt mark passes this point and stopped as the mark again passes this point after the greater of 5 minutes or 5 belt revolutions.

1

Menu entry: 2 Pulse per rev = 1000 Revs =5

2

Manual entry of Pulses/Rev or press Enter to continue
--

3

Manual entry of N. of Revs or press enter to continue
--

4

To start belt pulse count, Press E Pulse counted = Time =
--

5

To stop belt pulse count, Press E Pulses counted = Time =
--

6

Enter number of belt revolutions ? Pulses counted = Time =

7

Pulses per belt revolution = Press E to save, otherwise press A
--

2. If the pulses per rev are known, then manually key in the number of pulses and press E. Otherwise simply press E to continue.

3. Manually key in the number of revs (for the above number of pulses) and press E. Otherwise press E to continue.

4. At the moment the belt mark passes the fixed point chosen, press E to start the Masterweigh counting pulses, and start counting revolutions. Note that the display panel will show the counting.

5. After at least 5 minutes, press E again to stop the count as the mark passes the fixed point.

6. Key in the number of revolutions counted, and press E to confirm.

7. Press E to save the number of pulses/rev just calibrated, otherwise press A to abort and return to the original values (if any).

1. At Menu Entry 2, press Enter to proceed with calibration.

MENU 3 – ZERO CALIBRATION

This menu entry enables the operating zero to be calibrated. A specified number of belt revolutions are run (as determined by Menu 2), with no material or calibration weights on the belt. If the zero is correct then the mass total accumulated over the period will be zero. The display shows the currently stored value in millivolts, as read at the load-cell input including any contribution made by the autozero function.

Note that the zero value is automatically adjusted if the excitation voltage changes.

1

Menu entry: 3
Zero cal. = 2.563mV 2.563mV ZTrck

2

Manual entry of Zero Error, 0.000mV
or press Enter to continue

3

Press E to continue
Mass rate = 0.000

4

(Zero reset) To Start zero cal, Press E
Mass rate = 0.000 Revs = 0.0

5

To Abort zero calibration, Press A
Mass rate = 0.000 Revs = 0.0

6

To calculate new calibration, Press E
Mass total = 1.150 Revs = 10

7

Zero error = 2.756 millivolts
Press E to save, otherwise press A

1. At Menu Entry 3, press Enter to proceed.

2. (Optional) Using a digital voltmeter, measure the belt zero error value (in millivolts) at the loadcell, or read the mV level displayed in menu 8.

Manually key in the value to the Masterweigh and press the Enter key to accept. Otherwise, press Enter with no data entered to continue with no change.

Note that entering this value does not negate the need to perform a zero calibration.

3. The live zero error is now displayed as a mass rate. Press Enter for the loadcell calibration procedure.

4. The mass total will now display zero. Check that the belt is empty, then press the Enter key to begin the zero calibration test.

5. The difference between the current loadcell zero and the actual load reading is accumulated over the test duration, which is the total number of belt revolutions specified in menu 2.

The test can be aborted at any time by pressing the Abort key. If the test is aborted, the "working copy" of the load zero is reinitialised from the stored load zero calibration value. This "working copy" normally includes contributions from both the load zero calibration (as carried out in this menu entry) and the auto zero tracking function. It is thus possible by entering the menu to this level and then aborting to reinitialise the working copy of the load zero and remove any auto zero tracking contribution.

MENU 3 – ZERO CALIBRATION (Cont'd)

6. This display will come up automatically when the belt has completed the required number of revolutions. The measuring phase of the test has finished and the resulting mass total is displayed. This mass total should be approximately zero, however if non-zero then a new loadcell zero may be required.

Press the Enter key to display the millivolt offset resulting from this test.

7. The new loadcell zero, or offset, is displayed in millivolts. Press the Enter key to save this value as the new loadcell zero, or press Abort to exit without saving.

MENU 4 – FIXED WEIGHT CALIBRATION

This menu entry allows the automatic calibration of the load-cell span. The test is run over a preset number of belt revolutions, as in Menu 2, during which calibration weights (or weigh chains) are placed on the belt or weighframe. A mass total is accumulated in the course of the test. This total is then compared with an expected or "target" weight and the span adjusted accordingly. The display shows the currently stored load-cell span value.

1

Menu entry : 4
Fixed weight calibrate, span = 222.1

2

Manual entry of Span Factor, 0.000
or press Enter to continue

3

Span Cal Mode = Fixed Weight
Press Clear to Change Enter to accept

4

Current weight = 120.8 tonnes
Enter target weight ? 0.000 tonnes

5

Press E to continue
Mass rate = 0.000

6

To Start span calibration, Press E
Mass Rate = 0.000 Revs = 0.0

7

To abort span calibration, Press A
Mass rate = 1543.000 Revs = 1.507

8

To calculate new calibration, Press E
Mass total = 120.000 Revs = 10

New span factor = 223.580
Press E to save, otherwise press A

10 (Seen only if span invalid)

Span of 345678.123 is invalid
Press A to continue

1. Press Enter when at Menu Entry 4 to proceed.

2. At this stage the belt span factor can be set manually by entering the desired span factor and pressing the Enter key. If no value has been entered, then no change is made to the stored value and the next level is entered.

3. Masterweigh 5 has been provided with two methods of span calibration, "Fixed Weight" or "Empirical" (Menu 5).

After initial calibration, the user can, by toggling "Fixed Weight" to "R-Cal", perform a calibration verification. An explanation of this procedure follows this text.

For initial calibration, toggle this menu step to Fixed Weight by pressing the Clear "C" button, if R-Cal has been selected.

9

MENU 4 – FIXED WEIGHT CALIBRATION (Cont'd)

4. The target weight is the mass total that is expected over the number of belt revolutions as currently set. (Menu 2). This target weight may at this point be changed to suit the calibration weights being used. Note that this value will generally be determined by running this procedure and recording the result, immediately after performing an empirical calibration. (Menu 5). A load zero calibration should generally be performed (Menu 3) before running this procedure.

If a new value is entered then pressing the Enter key will save this as the new target weight. If the Enter key is pressed without entering a target weight, then no change to the stored value occurs.

5. The current mass rate is shown, the number of belt revolutions is zeroed. Press the Enter key to start the test.

6. Once started the test will run until the currently specified number of belt revolutions has been counted. (Refer to Menu 2).

7. During this step the weight is totalised over the specified number of belt revolutions, after which time the totalisation is automatically stopped. If the Enter key is pressed during the test, then the totalisation will be terminated, with a mass total of zero. The test can be aborted at any time by pressing the Abort key.

8. The resulting mass total is displayed along with the number of belt revolutions counted. Press the Enter key to calculate the new span calibration factor.

9. The new derived loadcell span is displayed. Press the Enter key to save this value as the new loadcell span. Press the Abort key if this value is not to be stored.

10. Should the span value calculated be outside the range 0.1 to 3000 then the Masterweigh will display a warning message. Under these circumstances the new span will not be saved, and the unit will revert to the value previously stored.

1. Ideally conveyor belt scales should initially be calibrated using empirical data obtained from accurate static scales. However, in most situations this task is impossible to achieve but the fact remains that there is no substitution for data being input to Masterweigh 5 that has been derived from real material bearing down on the load-cell via the weighframe/carriage at representative speeds.

2. A calibration chain, a device that rolls on top of the belt provides the next best method of calibration and check calibration. It imparts load to the cells through the belt but can not simulate belt tensions as a fully loaded belt does.

3. Static calibration weights are often used where a chain is impractical to use. Bars of a known weight are loaded directly onto the weighframe and hence simulated a load. This method does not take into consideration belt tension or weight transfer through the belt. It does however, exercise the weighframes mechanics.

4. R-Cal is an electronic method of checking the calibration. A simulated loadcell signal is created by running the belt empty and electronically unbalancing the loadcell by switching in a reference signal across one arm of the loadcell bridge.

This method provides a reasonable method of quickly checking a weightometer but is no substitution for the aforementioned calibration methods.

The software required to implement this function is supplied in all Masterweigh 5 units but the hardware required for the use is an optional extra and therefore only supplied to order.

Assuming that your system is rigged for R-Cal, proceed as follows.

MENU 4 – FIXED WEIGHT CALIBRATION (Cont'd)

Initially, calibration Menu 4 should be accessed and the enter key pushed until the sub menu Span Cal Mode is reached.

Menu 4:

Span Cal Mode = R-Cal
Press Clear to change, Enter to accept

Toggle the clear key until R-Cal has been selected.

Now proceed as for normal calibration which is performed as described under Menu Entry No. 4.

When Masterweigh 5 completes the test, note the number but do not accept it by pressing enter. Press the Abort key.

The total achieved should be logged and future R-Cal tests reference to it. If the value recorded in subsequent tests exceeds +/- 0.5% of the original value perform a full calibration using weights etc.

Note: Zero system prior to R-Cal test.

MENU 5 – EMPIRICAL SPAN CALIBRATION

This menu entry enables the entry of manual belt totalisations and the resultant recalculation of the load-cell span. To use this calibration facility, it is necessary to weigh a quantity of material with the belt scales and then to accurately determine the actual mass of that material by independent means (i.e. via a weighbridge). The two totals are then entered and the Masterweigh computes the new span factor.

1

Menu entry: 5 Empirical calibration, span = 211.7
--

2

Enter weigh bridge total? 0.000

3

Enter belt scale total? 0.000

4

New span = 205.6, previous = 211.7

1. At menu Entry 5, press Enter to proceed.
2. Enter the exact mass total, as measured by the weighbridge. Press Enter when the data is correct.
3. Enter the mass total as measured by the weigher. Press Enter.
4. Press Enter to store the new span value as the load-cell span calibration factor. Press Abort if no update is required. Press Menu and Enter to save.

THIS PAGE INTENTIONALLY LEFT
BLANK.

MENU 6 – NULL LEVEL

This entry displays the level at which the load is considered to be zero. Below this level, the mass rate display will show zero, no increment of the mass total will occur, no pulse outputs to the pulse counter and the mass rate analog output will be set to 4.0mA.

Take note of the highest equivalent mass rate reached, then enter a value slightly higher than this level. Eg if the mass rate was swinging from -20 to 0 to +20 select 22 as the null level. On a correctly installed and aligned weigher, this figure should be approximately 1% to 2% of capacity.

1

Menu entry : 6 Null level = 20.000 tonnes/hour

2

Enter a new null level ? 25 Mass rate = 22.657 tonnes/hour

3

Enter belt scale total ? 0.000 <input type="checkbox"/>

4

New span = 205.6, Previous=211.7 Press E to save, otherwise press A
--

1. At Menu Entry 6, press Enter to proceed.
2. Enter the exact mass total, as measured by the weighbridge or other accurate method. Press Enter when the data is correct.
3. Enter the mass total as measured by this Masterweigh unit. Press Enter.
4. Press Enter to store the new span value as the loadcell span calibration factor. Press Abort if no update is required.
5. At Menu Entry 6, press Enter to proceed.
6. Key in the new null level of zero. Press Enter when the data is correct.

Note on selecting the null level : This entry is used to mask variations in mass rate caused by variations in the belt weight, caused by the belt splice etc. To select the null level, observe the mass rate shown over several belt revolutions with the belt running completely empty (ie no product or calibration weights).

MENU 7 – AUTO ZERO TRACKING

This entry specifies the mass rate level below which automatic zero tracking occurs and the number of belt revolutions required before a new zero level is established in the Masterweigh. Control of the Autozero Alarm relay is achieved from this menu. The auto zero mode will not be entered, or continue unless the mass rate remains below the specified level. The value is normally set at approximately 1.5% of capacity. A qualifying time delay period is also provided to ensure that the belt is completely free of material. Should it be necessary to clear the present auto zero value, then this can be done by entering Menu 3 (load zero calibration), then aborting after starting the test. A "z" will be displayed at the right hand side, bottom line, of the main mass rate/mass total display, when the auto zero conditions are met and the Masterweigh is collecting data for a possible new zero level. Note: The auto zero tracking procedure is inhibited under the following conditions:-

- ✱ Masterweigh not in the mass rate / mass total display mode
- ✱ Input tach frequency less than 5Hz.

It may be required that the user wishes to know if the Autozero function is being forced to zero out, belt zero errors which could be considered as abnormal. This is achieved by setting a window around the signal being returned during any period that the belt is considered to be running empty by the computer. The window is set in this menu at step 5 & 6. If the signal from the load cell falls outside these user preset levels then the Autozero limit alarm relay will energise.

Under some circumstances it may be necessary to increase the tolerance at which Masterweigh flags in the display that a negative loadcell excursions has taken place which is greater than the level set in the null x 2.

The error is only flagged in the local display in the form of an "E" at the right hand side of the display where the "Z" is normally shown.

Step 7 allows the user to increase the tolerance before displaying the "E". At step 8 the user can toggle the above function on or off depending on preferences.

Note: Under normal running conditions negative loadcell excursions should not be occurring! Check the weigh area for abnormalities.

1

Menu Entry: 7
Zero Track if greater than 20.0 for 5 revs

2

Auto Zero Level = 20.00 tonnes /hour

3

Auto zeroing period = 5 revs
Enter new period? 0

4

Delay before auto zeroing = 60secs
Enter new Delay? 0

5

Auto Zero Low Limit – 0.000mV
Enter new level?

6

Auto Zero High Limit – 0.000mV
Enter new level? 0.000mV

7

Auto Zero Error Level – 2 times Auto Zero

8

Autozero Error Display is : On
Press Clear to Change, Enter to accept

MENU 7 – AUTO ZERO TRACKING (Cont'd)

1. At Menu Entry 7, press Enter to proceed.
2. Enter the new autozero level in mass rate units and press the Enter key. If the Enter key is pressed with no data entry then the stored value remains unchanged.
3. Enter the period required (in belt revolutions) over which autozeroing occurs. Note that the number of belt revolutions should be chosen such that the total zeroing period is of the order of 5 minutes or more. This will ensure that accurate zero levels are produced. Note that the actual zero level used by the Masterweigh will not be updated until a zeroing period has been completed. If a new value is entered and the Enter key is pressed then that value is saved, otherwise no update occurs.
4. This step enables the qualifying delay time to be set. Choose a time that will ensure that all material is off the belt. The delay time commences when the mass rate falls below the minimum level set above.
5. Step five allows the user to enter the value in mV below which it may be considered that an invalid Autozero is taking place.
6. Step six allows the user to enter the value in mV above which it may be considered that an invalid Autozero is taking place.
7. Increase this factor if the letter "E" is being encountered in the main display.
8. The function of displaying the letter "E" can be switched on or off here by pressing the "C" button.

MENU 8 – LOADCELL INPUT (Millivolts)

This entry displays the load-cell input in millivolts. The displayed value is unaffected by the load zero, load calibration, and zero tracking functions. The entry also displays the excitation voltage as currently sensed by the Masterweigh. It is displayed to the nearest volt only, ie. 10V is in the range 9.501 to 10.5V. It is updated once every 3 minutes.

This display enables a user to confirm that the Masterweigh is correctly sensing the excitation voltage and thus that all links etc. are correctly installed. Incorrect excitation sensing will result in inaccurate and unstable mass rate measurements. Access is also available to the output of the voltage to frequency converters.

1

Menu Entry : 8
Loadcell = 16mV, (Extn. = 10V)

2

V to F count = xxxxx
Press Enter to continue

This facility is for technician's use only.

1. Menu Entry 8 displays the load-cell millivolt output and excitation voltage.
2. Press "E" to access the current V to F output.
3. Press "E" again to return to Menu Entry 8

MENU ENTRY 9 – TACHO FREQUENCY

This entry displays the current tacho frequency in hertz, (the input range is 5Hz to 1000Hz) and switches between software or hardware inputs.

1

Menu Entry 9 :
Tacho Frequency = 50.005 Hertz

2

Tacho Source = Hardware
Press Clear to change, Enter to accept

3

Tacho Source = Simulated
Press Clear to change, Enter to accept

4

Tacho Source = Ext. Con
Press Clear to change, Enter to accept

2. Press "C" to change (or toggle) between the available pulse sources which are :
 - Hardware – input signal to the system as generated by the speed sensor (Magnetic pick-up or optical tachometer)
 - Simulated – an internally generated 100Hz signal that is always on.
 - Ext.Con – an internally generated signal that is only on when an external contact is closed between terminals "DG" and "T In" on terminal strip J3 (usually auxillary motor contacts).

3. Press "E" to accept and return to the Menu Entry 9.

1. Press "E" to enter the menu to select the source of the tachometer signal.

MENU 10 – FILTER CONSTANTS

Filtering can be applied to the following functions:

Displayed mass rate
4-20mA mass rate output
Tacho input

The level of filtering is specified by a constant that may be in the range 1 second to 120 seconds. Time constants greater than 120 seconds have the same effect as a 120-second constant.

A time constant of 1 second is equivalent to no filtering. Time constants greater than 1 second introduce a delay in the rate of change of the filtered function.

4. The tachometer input filter is displayed here and a new constant applied if necessary.

Note: At each step, pressing the Enter key will save the new value. If a new value has not been entered, then the current value is unchanged.

1

Menu Entry : 10
To modify Filter factors press Enter

2

Display Time constant is 2 secs
Enter new Time constant 0

3

Rate O/P Time constant is 4secs
Enter new Time constant

4

Tacho I/P Time constant is 1 secs
Enter new time constant

1. Press Enter to modify the display filter time constant.
2. The display mass rate filter time constant is shown. When a time constant of greater than 1 is selected, the main mass rate display is damped. A new value for the display filter constant may be entered.
3. The 4-20mA mass rate output filter time constant is now displayed. A new value for the mass rate output filter constant may be entered.

MENU 11 – MODIFICATION OF DISPLAYED UNITS

The displayed units for mass may be selected from tonnes, lbs, tons and kgs. The displayed units for mass rate will be the same as those selected for mass, ie. tonnes/hour, lbs/hour, tons/hour or kgs/hour.

1

Menu entry : 11
To modify display units, Press E

2

1 = tons 2 = lbs
3 = kgs 4 = tonnes

1. Pressing the Enter key will advance to select mass units.

2. At this stage the mass units which can be displayed are shown. To select the mass unit required press the number key associated with it, then press the Enter key. The units number selected will be shown in the lower right hand corner of the display. Numbers greater than 4 will not change the currently displayed mass total and mass rate units. Pressing the Enter key without entering a new unit number, or pressing Abort, will not change the currently displayed units.

3. Press Menu and Enter to save.

MENU ENTRY 12 – BELT SPEED INDICATION

This entry displays the current belt speed in metres/second (or feet/minute if the mass rate unit is in tons or lbs) based on the total belt length in metres.

1

Menu entry : 12
Belt speed = 3.10 metre/second

2

Belt load = 75.015 kg/metre
Press E to continue

3

Current belt total length = 200.000m
Enter new belt total length

4

Enter measured belt speed in metres/min
0.000 Press E for belt length

5

Calculated belt length = 0.000 metres
Press E to save, otherwise Press A

1. This entry shows the current calculated belt speed. Press Enter once view the current belt loading.

2. The current calculated belt loading will be displayed in the appropriate units (Kg/m or Lb/ft, depending on the mass units selected). This belt loading is calculated from the current Mass Rate and belt speed.

3. The current value for the belt length is shown. If the belt length is known, enter it here.

4. If the belt length is not known, and an accurate belt speed has been physically measured from the belt itself, the Masterweigh can calculate the belt length. Enter the measured belt speed in the units shown, then press E to calculate the new belt length.

5. If you entered a belt speed, this value will be the calculated belt length. If it seems correct, Press enter to save the value, or abort to ignore the calculation. Note that if you entered a belt length in step 3 and not a belt speed in step 4, this value will be meaningless. Press E to continue.

MENU Y 13 – CLEARING MASS TOTAL

Menu entry : 13
Press C, to clear Mass Total

1. When the mass total on the "mass rate/mass total" display (MRMT) is to be zeroed, press C at Menu Entry 13. All totalised figures are then cancelled by the integrator.

Press Menu, then Enter to return to the MRMT display.

MENU 14 – REAL TIME CLOCK

This menu controls the operation of the Masterweigh 5 real time clock. The real time clock is a separate module with its own battery power source that will continue to keep accurate time, even in the case of power loss to the Masterweigh 5 unit. This menu is only accessible if the real time clock module has been installed. Step 1 displays the following current time, date and day-of-week information.

1

Menu entry : 14	Wed
Time = 09:12:43am	Date = 9/6/94

Pressing Enter advances to:

2

Elapsed Time = Press clear to reset	
0 days	00.19.58 hours

Here a free running elapsed time count is displayed. Pressing Clear will reset the elapsed time counter. Pressing Enter advances to:

3

Clock is currently in 12-hour mode
Press +/- to change, Enter to accept

The Masterweigh 5 real time clock can be configured to display the current time in either 12 or 24-hour mode, the selection is made in this menu.

Pressing Enter advances to:

4

Time = 09:13:56am
Enter new time (HHMM)

Here the current time is displayed and may be modified. A 4-digit time string of the form "HHMM" needs to be entered. Where HH is the desired hours, ie. "12", "03", etc, and MM is the desired minutes, ie. "45", "07", etc. E.g. to enter 9:30, press 0,9,3,0,E.

Pressing Enter advances to:

5

Time is currently : am
Press +/- to change, Enter to accept

Here the current 12 hour time format postfix is displayed, and may be modified. The user can select either "am" or "pm".

Pressing Enter advances to:

6

Date = 29/6/94
Enter new date (DDMMYY)

Here the current date is displayed and may be modified. A 6-digit time string of the form "DDMMYY" needs to be entered. Where DD is the desired days, ie. "27", "04", etc. MM is the desired months, ie. "11", "05" etc and YY is the desired years, ie. "94", "01"etc. E.g. to enter 12 Feb 2000, press 1,2,0,2,0,0,E.

Pressing Enter advances to:

7

Day of the week = Wednesday
Press +/- to change, Enter to accept

Here the current day of the week is displayed and may be changed by the user. Pressing the "+" or "-" key toggles through the days of the week.

Pressing Enter advances to:

8

Power on hours = 1
Press Enter to continue

Here a count of power-on hours since the last unit re-configuration is displayed. This display is provided for information only, it is not user adjustable. Pressing Enter returns to step 1 above.

MENU 15 – ACCESS CODE

Masterweigh 5 provides for 2 levels of user configurable access code. If no access codes are activated, all Masterweigh 5 menus are accessible all the time. An Operator and a Configuration access code may be entered. As soon as an access code is activated, the user cannot leave the main mass rate/total menu and gain entry to the menu system without entering a valid/correct access code.

Entering the correct Configuration access code allows full access to all Masterweigh 5 menus and parameters. Entering the correct Operator access code allows limited access to the Masterweigh 5 menu system.

Step 1 of this menu displays:

1

Menu Entry : 15
Press Enter to modify access codes

Unless the special security key has been installed in link 3 of the CPU PCB, the following menus cannot be accessed. If the security key is installed, then pressing Enter advances to:

2

Operator Access Code :
Enter access code ? 0

Here a new Operator access code may be entered, this can be a number in the range 1 to 32766. Note that entering an Operator access code of 0 (zero) clears the Operator access code. If the security key is installed, then pressing Enter advances to:

3

Configuration access code:
Enter access code ? 0

Here a new Configuration access code may be entered, this can be a number in the range 1 to 32766. Note that entering a Configuration access code of 0 (zero) clears

the Configuration access code. Pressing Enter returns to step 1 above.

MENU 16 – REPORT PRINTING (Optional)

This menu controls the automatic report printing function of the Masterweigh 5. This menu is only accessible if the real time clock module has been installed. It is possible to configure the Masterweigh 5 to automatically produce a report, via the RS232 serial port, on either a time or mass total basis. It is also possible to manually command a report at any time. The format of the report is:

Masterweigh Report

Date = 29/06/00

Time = 12:01:41

Mass total = 2474450 tonnes

Mass rate = 5380 tonnes/hour

Menu step 1 displays the following:

1

Menu entry : 16	
Automatic report printing	Off

Pressing Enter advances to:

2

Press Clear to print report NOW
Press E to continue

Pressing Clear will cause a report to be immediately printed via the RS232 serial port.

Pressing Enter advances to:

3

Report Mode = Off
Press Clear to change, Enter to accept

Pressing Clear toggles the report mode between:

- * off,
- * time based, or
- * total based

Pressing Enter when report mode is Off, returns to Step 1 above.

Pressing Enter when report mode is Time based advances to:

4

Report every	1 hour
Enter new value ?	0 hours

Here the time-based reporting period is displayed and may be modified. The time period entered here will cause the Masterweigh 5 to automatically print a report via the serial port every time the period expires, ie. a report period of 4 hours will cause a report to be automatically printed at midnight, 4 am, 8 am, noon, 4 pm, 8 pm, etc. Pressing enter here returns to step 1 above.

Pressing Enter when report mode is Total based advances to:

5

Report every	100 tonnes
Enter new value ?	0 tonnes

Here the total-based reporting increment is displayed and may be modified. The mass total increment entered here will cause the Masterweigh 5 to automatically print a report via the serial port every time the increment is added to the mass total, ie. a total increment of 2500 tonnes will cause a report to be automatically printed at 20000 tonnes, 22500 tonnes, 25000 tonnes, 27500 tonnes, etc. Pressing Enter here returns to step 1 above.

The RS232 Parameter are:

Baud	19200 bps
Data bit	8 bits
Stop bit	2 bits
Parity	None

RECONFIGURING MASTERWEIGH 5

Under some circumstances Masterweigh's memory can be corrupted so that correct operation of the unit is not possible. This condition can occur if Masterweigh has been subjected to severe electrical noise or spikes.

These phenomena usually occur on 240/110V AC power lines, however they can also appear on the load-cell input cables as well as the tachometer cables. Masterweigh has been protected as far as possible, however, severe noise or spikes can get through.

Once any part of memory has been corrupted Masterweigh will detect it and automatically flag an error. If the corruption has only changed data, an error may not be detected and some erroneous results may occur. The only way to clear the memory of this data is by re-initialising.

Switching off and on will not clear the memory. The act of re-initialising causes all the calibration data to be lost and replaced by factory data. The calibration data specific to your application can easily be re-entered if you have kept a note of what was in the menus.

Menu 1 however, does have specific data that is logged on the main PCB under Calibration zero and Precision ref..

LOG ALL CALIBRATION DATA, AS YOU MAY NEED TO MANUALLY RE-ENTER IT AT A LATER DATE.

TO RE-INITIALISE MASTERWEIGH 5 PROCEED AS FOLLOWS:

1. Switch off Masterweigh.
2. Simultaneously press the Blank and Abort keys.
3. With both the above keys pressed switch Masterweigh on.
4. The display will now show the message:

"Press C to Configure
Any other key to continue"
5. Now press the C key and Masterweigh will return to normal running mode.
6. Masterweigh is now configured to factory defaults.
7. Press Menu to enter menu entry 1, then press C to enter the calibration data section. The display will warn you not to continue. Press E to continue.
8. The display will request a new Calibration Zero to be entered. Enter the value that is engraved onto the right hand side of the main pcb under the label "Cal Zero", then press E.
9. The display will request a new Precision Reference. Enter the value that is engraved onto the right hand side of the main pcb under the label "Prec. Ref.", then press E.
10. Press M then E to return to normal running mode.

Remember: If MW5 is reconfigured all calibration data is lost! Keep Notes.

FACILITIES AVAILABLE

Introduction

The Masterweigh is a precision microprocessor based instrument for accurate integration of mass totals in belt scale applications.

The "core" highly successful Masterweigh 1 design has been in operation for many years and has been proven in the field and tested by the National Standards Authority of Australia. The tests on the core proved that the instrument is accurate to 0.1% over its operating range. The operating environment is based on a series of discrete Menus. Each menu allows the user to set up a working environment or calibrate the system.

For a detailed description of each menu, refer to the following pages of the manual.

Note that detailed information relating to the keyboard operating command procedures is to be found earlier in this manual.

Load Cell Input and Excitation

The Masterweigh is designed to accept a load-cell millivolt signal in the range 0 to 32 millivolts with a resolution of approximately 4 microvolts.

An on-card voltage source provides excitation for the load-cell. This source can provide excitation for up to four 350 ohm load-cells in parallel.

The excitation is not precisely controlled, but is maintained within approximately 1 percent of the set value. The Masterweigh monitors the excitation voltage and automatically compensates for any voltage change that may occur.

The excitation is adjustable over a wide range to enable optimum performance to be obtained from a wide variety of load-cells.

The Masterweigh may be configured to provide either a positive excitation voltage referenced to ground (unipolar) or a plus/minus (bipolar) voltage, by configuration

of links. The positive voltage is continuously adjustable from +4 to +12 volts. The negative voltage is set at -12 volts. The Masterweigh is factory set for a unipolar excitation of 10 volts.

Following adjustment of the excitation, allow a minimum of 30 seconds for the Masterweigh to update its internal excitation reading before proceeding with calibration functions.

The approximate value of the excitation voltage sensed by the Masterweigh is displayed in Menu 8. This should match the voltage sensed at terminals J3 pin 12 and 13, if link LK3 is correctly installed, and should be checked when configuring the Masterweigh. (Allow 30 seconds for update of display after adjusting the excitation).

Incorrect configuration of excitation sensing will cause erratic mass rate readings.

The millivolt input accepts either a differential millivolt signal or a half-bridge input and will operate accurately over a common mode range of minus 8 to plus 8 volts. The input is overload protected to plus or minus 35 volts on either terminal with the Masterweigh energised, and plus or minus 20 volts on either terminal when not energised. Transient overload capacity is much higher than this continuous rating, and depends on the duration of the overload.

FACILITIES AVAILABLE (Cont'd)

Load-cell Input and Excitation (Contd.)

The analog digital conversion is performed using voltage to frequency conversion techniques, thereby providing excellent rejection of signal noise over a wide frequency range.

With the exception of short periods allocated to self-calibration, the Masterweigh is continuously monitoring the load-cell input rather than periodically sampling, as is the case for systems which use dual-slope integrating converters. This results in a more accurate measurement of the rapidly fluctuating input signal from the load-cell.

Careful design of the input circuitry ensures excellent rejection of common-mode signals both AC and DC.

Note: The excitation voltage regulators are overload and short-circuit protected, however, short circuiting of the excitation output will interfere with normal operation of analog input circuitry and the RS232 interface.

Caution: Application of an external voltage source to the excitation terminals may cause serious damage to the Masterweigh.

No calibration or adjustment of the Masterweigh analog inputs is required. Gain and zero are automatically adjusted by the reference. This automatic calibration is repeated once every 30 seconds, whenever the Masterweigh is energised.

After energising the Masterweigh, always allow a minimum of thirty (30) seconds for this automatic calibration to be performed before initiating a span or zero calibration sequence.

(Note: If Masterweigh has not been energised for some time, allow 3 minutes before initiating the above).

Tacho Input and Supply a) Electrical Characteristics

The tacho input is designed to accept a voltage input of 2.5 to 50 volts peak and so will accept either a TTL or sinusoidal voltage input. The input threshold voltage is +1.2 volts at the positive input with respect to the negative input.

The negative input is directly connected to the Masterweigh grounds. Avoid earthing this input in the field as it will create ground loops.

The tacho input will not accept frequencies in excess of 800 Hz (approx.).

A regulated +5 volt supply is provided for energising a digital pulse generator. This supply is rated at 200mA maximum and is overload and short-circuit proof with fold-back current limiting.

It may be necessary to briefly remove all load after removing a short circuit in order to reset the protection circuit. Short-circuiting of the tacho +5 volt supply will not affect the Masterweigh CPU operation.

Masterweigh is fitted with a potentiometer (RV2) to adjust the tachometer's 5V rail if required. (Normally only used when the tacho supply drops to a voltage where the tachometer ceases to work owing to significant voltage drop from long cable runs, IS barriers or the like.

CAUTION: Application of an external voltage source to the tacho supply terminals may cause damage to the Masterweigh.

b) Frequency Selection

The tacho generator should be selected and fitted to provide a frequency input to the Masterweigh within the range 5 to 1000 Hz, to ensure compatibility & accurate measurement. The tachometer is normally selected for the user by the factory.

FACILITIES AVAILABLE (Cont'd)

Selection depends on rotational speed of the pick up pulley, which in turn is supplied by the user.

Note that the tacho frequency has no affect on the rate at which the load cell signal is sampled.

Pulse Output

The Masterweigh provides a pulse output for external accumulation of the mass total. Masterweigh provides for three methods of indicating when an increment in Masterweigh's total has occurred.

- 1) An Internally Generated + 5VDC Pulse
- 2) An Internally Generated + 28VDC Pulse
- 3) Contact closure from an internal relay (providing voltage free contacts).

Which of these options is used can be selected from links LK6, LK7, Lk8 and LK9 as shown in the USER CONFIGURATION section.

The pulse duration is adjustable in Menu 1. One pulse is output each time the least significant mass total digit displayed is incremented by 1 count. A minimum of 20 milliseconds is guaranteed between pulses, thereby providing a maximum pulse rate of 25 pulses per second. (20 milliseconds on, plus 20 milliseconds off).

The internal +5V supply is regulated to +5V. It is not isolated from ground. External load resistance should not be lower than 50 ohms.

The internal +28V is unregulated and may vary over the range 25-35V. It is isolated from ground to allow configuration of a fully isolated pulse output. This +28V supply is shared with the 4-20mA analogue loop output, and is rated at 400mA continuous maximum current.

The contact closure is completely isolated and is rated at 32V maximum and 500mA maximum. It must not be used for 110V or 240V operation.

All pulse outputs are protected by 2 of 500mA fast blow fuses, F2 and F3.

Analog Output

The Masterweigh provides one analog output channel. The output operates over a 4-20mA range and provides a resolution of better than 0.5%. It operates as a loop-powered configuration and therefore derives its operating power from the 4mA residual loop current. A minimum of 20 volts is required to operate with zero ohms load, rising by 1 volt for every 50 ohms of load, ie. 30 volt supply required for 500 ohm load.

The output can operate with supply voltage of up to 50 volts and provides excellent rejection of power supply ripple and noise. The loop power supply thus need not be heavily filtered or regulated.

An unregulated DC supply is provided on the Masterweigh board, which can be used for energisation of the analog loop.

This supply provides a nominal 28V DC and is isolated from the Masterweigh ground. Links are provided on the board to enable this supply to energise the analog output.

To use an external loop supply, configure links LK4 and LK5 on the board appropriately and connect the external supply in series with the analog loop.

Span calibration of the output is readily performed by accessing the analog calibration in the Menu 1 set up.

There is no provision for zero adjustment on the analog output.

Earthing

This is achieved by installing the shunt on LK1 (link) located on the lower pcb above the capacitors. Installing this link will connect the Masterweigh's digital and analog grounds to power earth.

FACILITIES AVAILABLE (Cont'd)

Display Backlighting

The liquid-crystal display used in the Masterweigh provides LED backlighting for improved readability under adverse light conditions. If the unmarked key has not been activated then the display will switch off if any key has not been used within 5 minutes.

System Output Status

A voltage free contact has been provided for remote monitoring of the Masterweigh autozero function. If the autozero function returns a value that is outside the "high and low" limits that were set in Menu 7, the relay will energise. It will remain energised until an operator initiated zero is performed in Menu 3.

USER CONFIGURATION

Power Supply PCB (Lower Board)

LK1 Grounding

When the shunt is in position Masterweigh is referenced to ground. When open Masterweigh is floating.

LK2 Excitation Selection

This link allows the user to select either a unipolar or bipolar excitation voltage.

Refer also to Section "Load-cell Input and Excitation".

Unipolar (OV) is used for excitation voltages in the range 4 to 13 volts. Selecting bipolar (-VE) allows a plus/minus excitation with a total voltage within the range 16 to 25 volts.

LK3 On-Board Half Bridge

This link allows use of input devices that have a half bridge configuration.

When linked for half bridge input (micro), the negative side of the 'load-cell' input is disconnected from the terminal block (J6), and instead connected to an on-board half bridge circuit. This half bridge is energised from the excitation as supplied to the external device.

The zero point is adjustable via RV1. (Refer to Section "Potentiometer Adjustments, RV1).

LK4 , LK5 Current loop supply

These links select the power supply for the analog output current loop. The supply can be an internally generated isolated 28VDC supply, or an external supply of 20 to 50VDC. Set the links to select the appropriate power source as follows :

Internally generated :

LK4	LK5
1-2	1-2

Externally generated :

LK4	LK5
2-3	2-3

LK6, LK7 ,LK8, LK9 Control Pulse Output Type

These links select the power source for the totaliser counter pulse output. Set the links to suit the external counter device.

Internally generated +5VDC (not isolated)

LK6	LK7	LK8	LK9
1-2	1-2	1-2	1-2

Internally generated +28 VDC (Isolated)

LK6	LK7	LK8	LK9
1-2	1-2	2-3	2-3

Relay provided voltage free contacts

LK6	LK7	LK8	LK9
2-3	2-3	2-3	2-3

CPU / PCB (Top Board)

LK1

When installed to the bottom, Masterweigh's digital communication is based on the RS232 protocol. When installed to the top the digital communication is based on the RS485 protocol. RS485 communications are only available if the main board has the relevant optional components installed.

LK2

Not user configurable. Link 1-4 & 3-6, or leave un-linked.

POTENTIOMETER ADJUSTMENTS

Power Supply PCB (Bottom Board)

RV1 : Used to adjust the load cell excitation used in conjunction with a digital meter or the Masterweigh when menu 8 has been selected.

RV2 : Used to boost the tachometer supply voltage when the voltage drops are evident at the tachometer, due to a large separation between Masterweigh and the tachometer, or due to Intrinsic Safety Barriers on the tachometer cables.

CPU / PCB (Top Board)

VR1 : Adjusts the LCD display viewing angle so that the display can be easily read.

VR2 : Used to span the analog output channel. Use this potentiometer with a digital current meter in series with the output. Use this potentiometer in conjunction with Menu 1, Sub Menu C, final step, to calibrate the analog output by setting the output to 20.000mA in the menu, then adjusting the potentiometer until the current meter shows 20.000mA

FIELD TERMINATIONS

J1 – Power supply input

- | | | |
|---------|---------------|---------|
| 1. L/L1 | 240VAC/110VAC | Active |
| 2. N/L2 | 240VAC/110VAC | Neutral |
| 3. G | 240VAC/110VAC | Earth |

J8 – Auto Zero Limit Alarm

- | | |
|--------|-------------------------|
| 1. COM | Common contact |
| 2. NO | Normally open contact |
| 3. NC | Normally closed contact |

J7 – System Status Relay

- | | |
|--------|-------------------------|
| 1. COM | Common contract |
| 2. NO | Normally open contract |
| 3. NC | Normally closed contact |

J3 – Load cell and tachometer inputs, pulse counter and analog outptuts

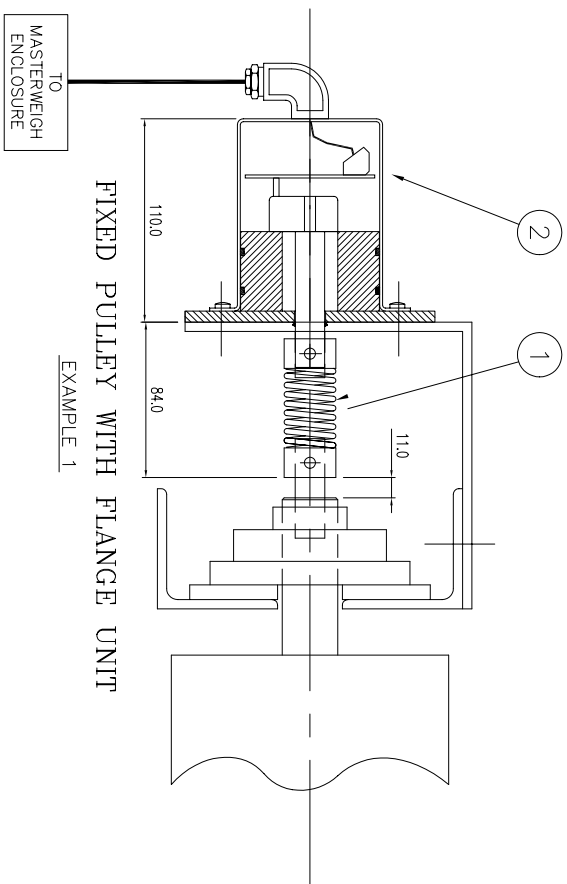
- | | |
|---------|-------------------------|
| 1. P+ | Pulse Counter Output |
| 2. P- | Pulse Counter Output |
| 3. Shd | Shield |
| 4. DG | Tacho Digital Ground |
| 5. Tin | Tacho Signal In |
| 6. TE | Tacho Excitation +5V |
| 7. A- | Analog output -ve |
| 8. A+ | Analog output +ve |
| 9. AG | Analog ground |
| 10.L+ | Loadcell output +ve |
| 11. L- | Loadcell output -ve |
| 12. E+ | Loadcell excitation +ve |
| 13. E- | Loadcell excitation -ve |
| 14. Shd | Loadcell Shield |

J5 – RS232 Communications Port

- | | |
|--------|----------|
| 1. GND | Ground |
| 2. TXD | Transmit |
| 3. RXD | Receive |

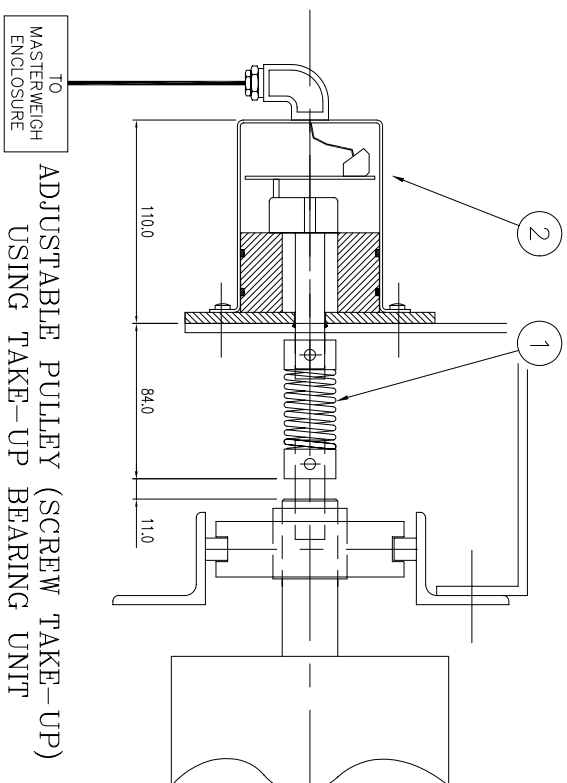
J6 – RS485 Communications Port

- | | |
|--------|----------|
| 1. TX+ | Transmit |
| 2. TX- | Transmit |
| 3. COM | Ground |
| 4. RX+ | Receive |
| 5. RX- | Receive |



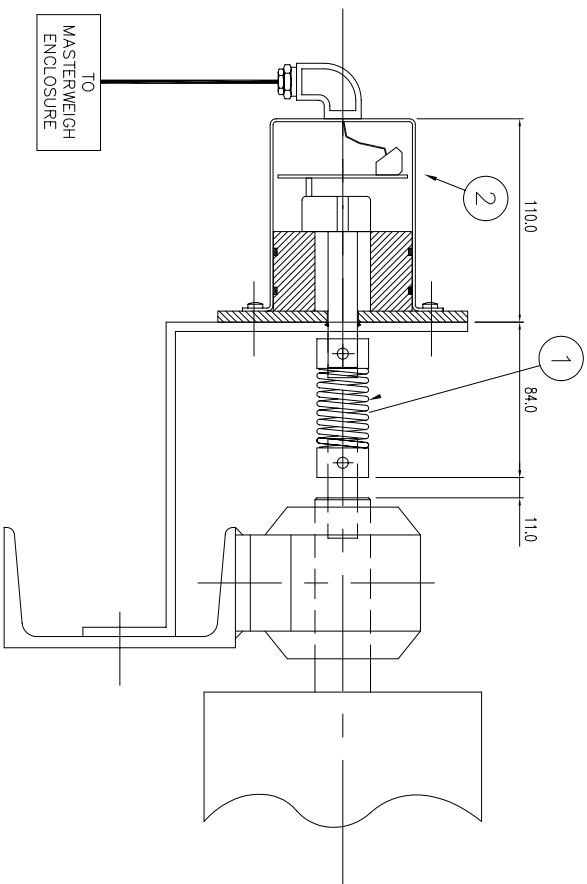
FIXED PULLEY WITH FLANGE UNIT

EXAMPLE 1

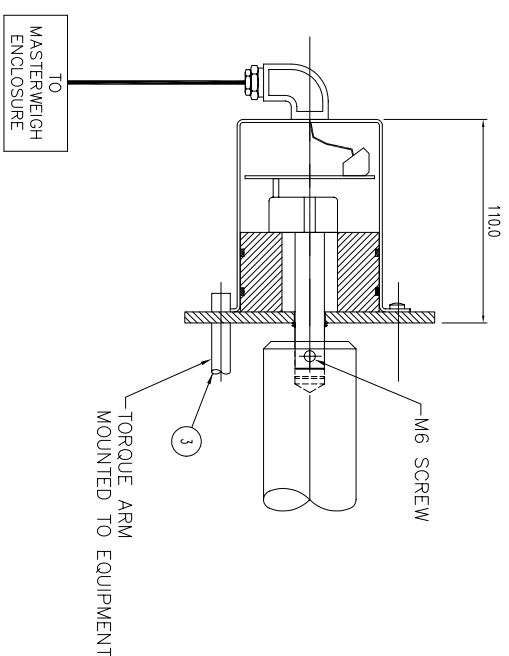


ADJUSTABLE PULLEY (SCREW TAKE-UP) USING TAKE-UP BEARING UNIT

EXAMPLE 3

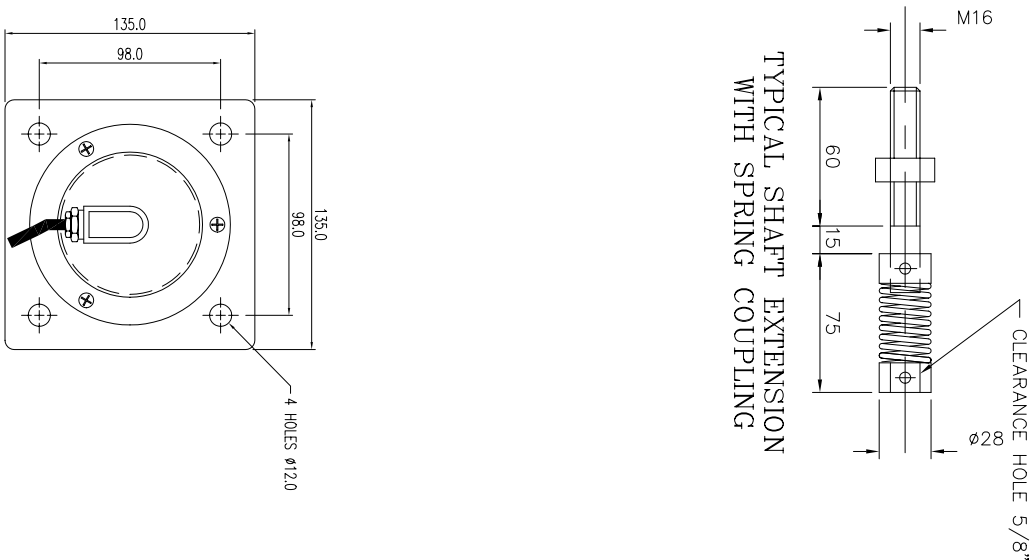


FIXED PULLEY WITH PLUMMER BLOCK MOUNTING

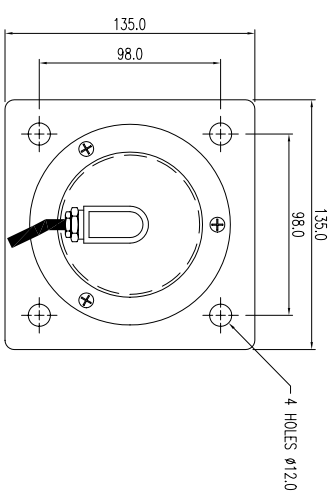


ROTARY SHAFT ENCODER ASSEMBLY MOUNTED DIRECTLY TO PULLEY

EXAMPLE 4

TYPICAL SHAFT EXTENSION
WITH SPRING COUPLING

END ELEVATION

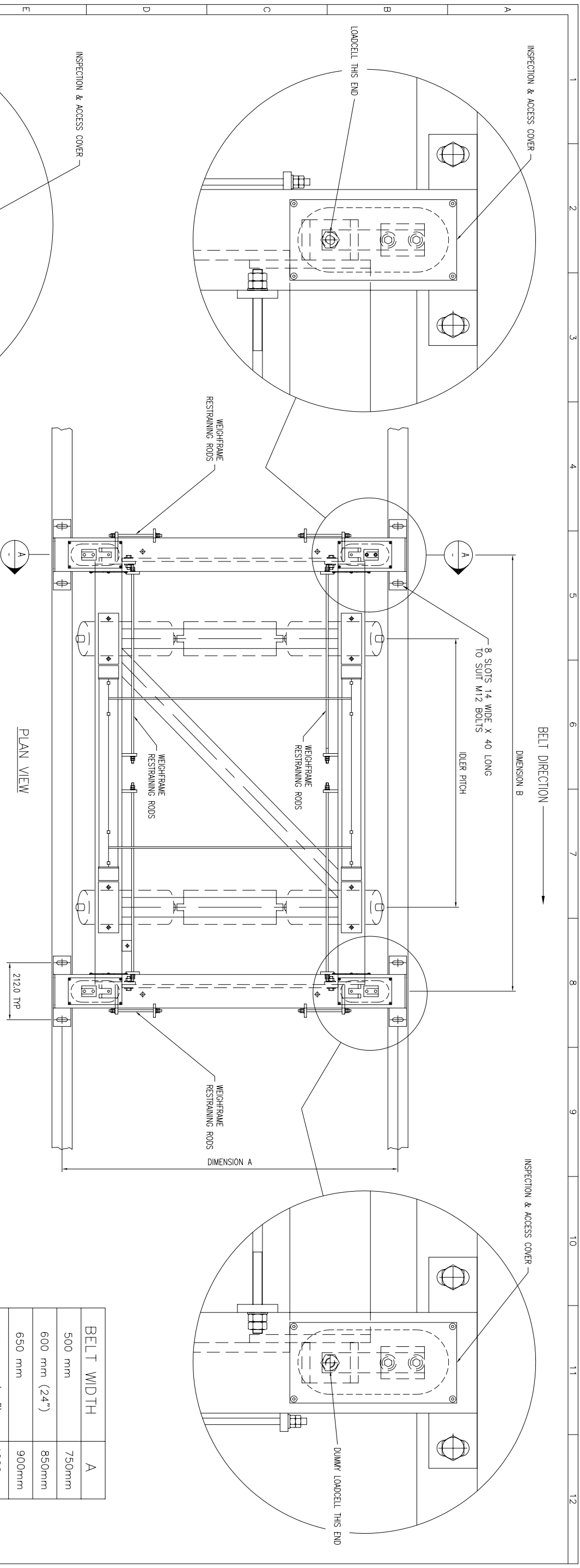


EXAMPLE 2

NOTES:

1. THIS DRAWING SHOWS TYPICAL EXAMPLES ONLY
2. IT IS RECOMMENDED THAT THE ROTARY SHAFT ENCODER (TACHO) AND SPRING COUPLING BE SHROUDED TO PROTECT AGAINST MECHANICAL DAMAGE.
3. EXAMPLE 3, BRACKET COUPLING BOLTS TO BE LOOSENED BEFORE ADJUSTING PULLEY TAKE-UP TO ALLOW FOR THE REALIGNMENT OF THE SHAFT ENCODER AND RETIGHTENED FOLLOWING ADJUSTMENT.

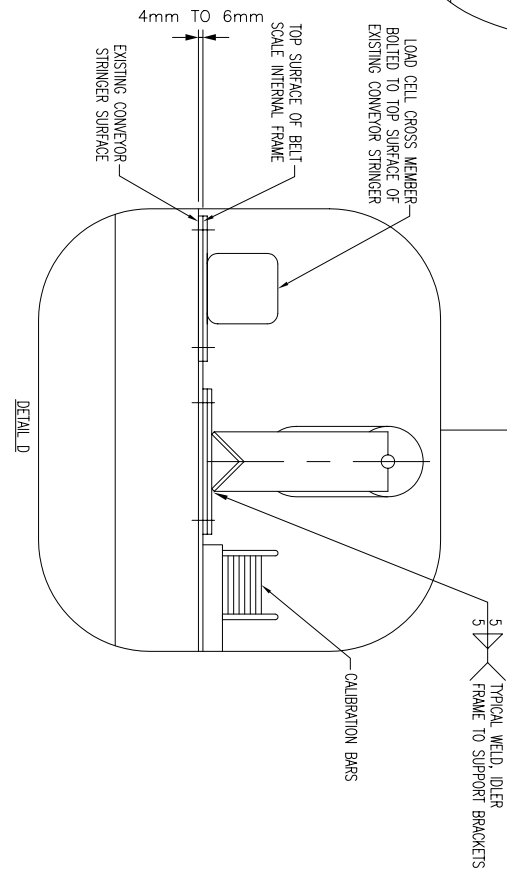
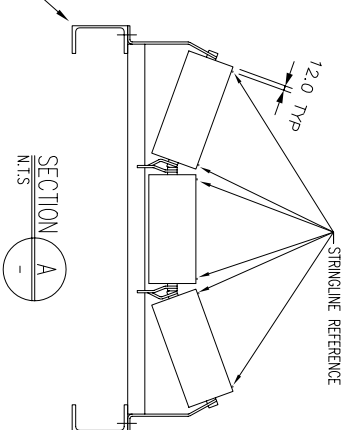
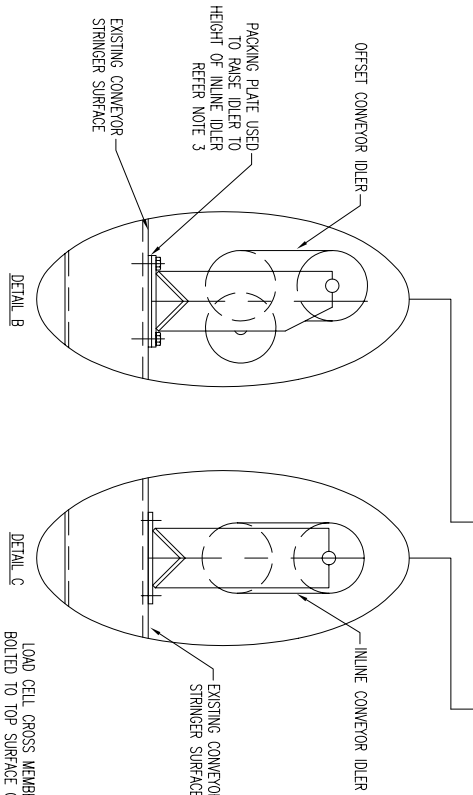
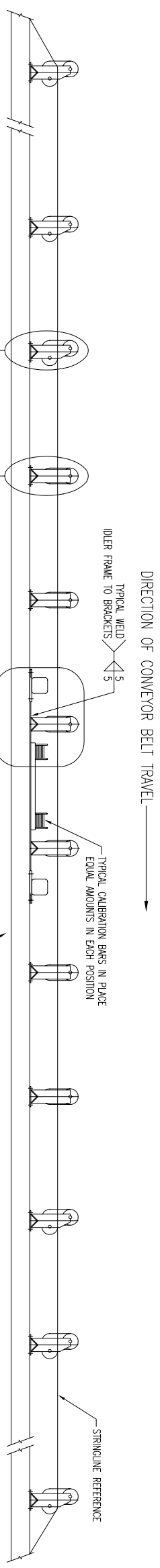
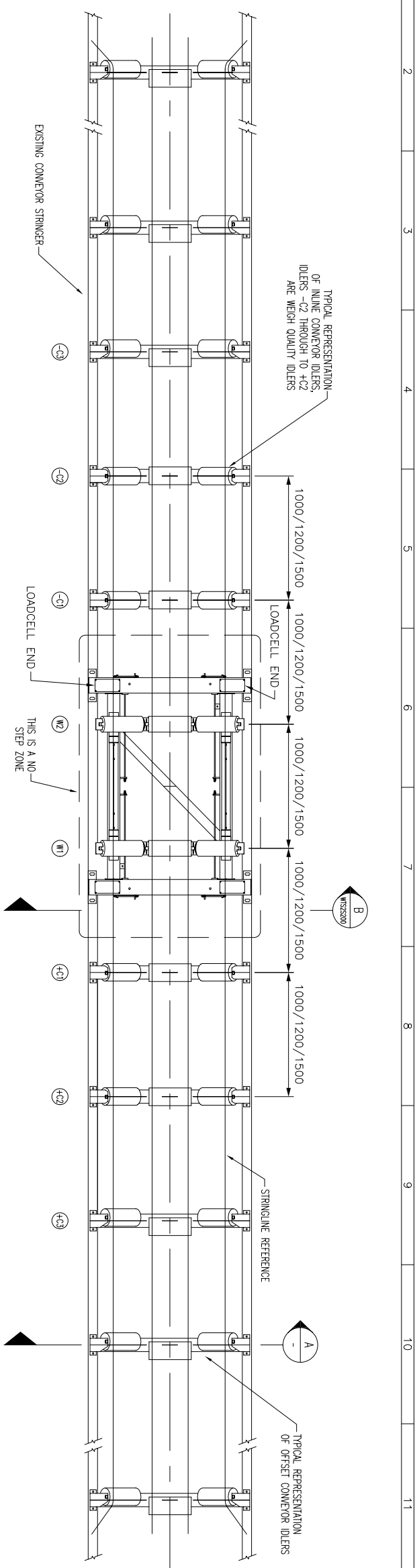
[illegible]



IDLER PITCH	B
1000mm	1625mm
1200mm	1825mm
1500mm	2025mm

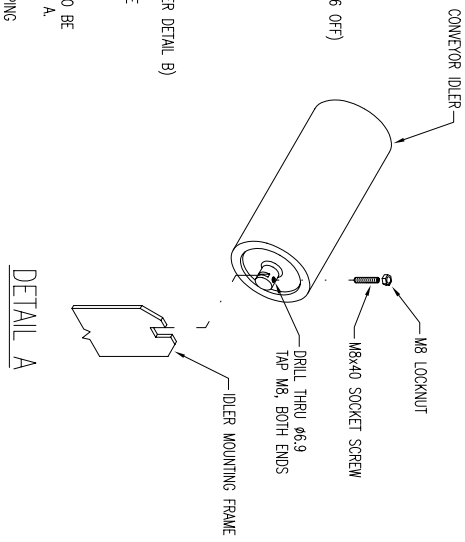
BELT WIDTH	A
500 mm	750mm
600 mm (24")	850mm
650 mm	900mm
750 mm (30")	1000mm
800 mm	1050mm
900 mm (36")	1150mm
1000 mm	1250mm
1050 mm (42")	1300mm
1200 mm (48")	1450mm
1350 mm (54")	1650mm
1400 mm	1700mm
1500 mm (60")	1800mm
1600 mm	2000mm
1800 mm (72")	2200mm
2000 mm	2400mm
2200 mm	2600mm

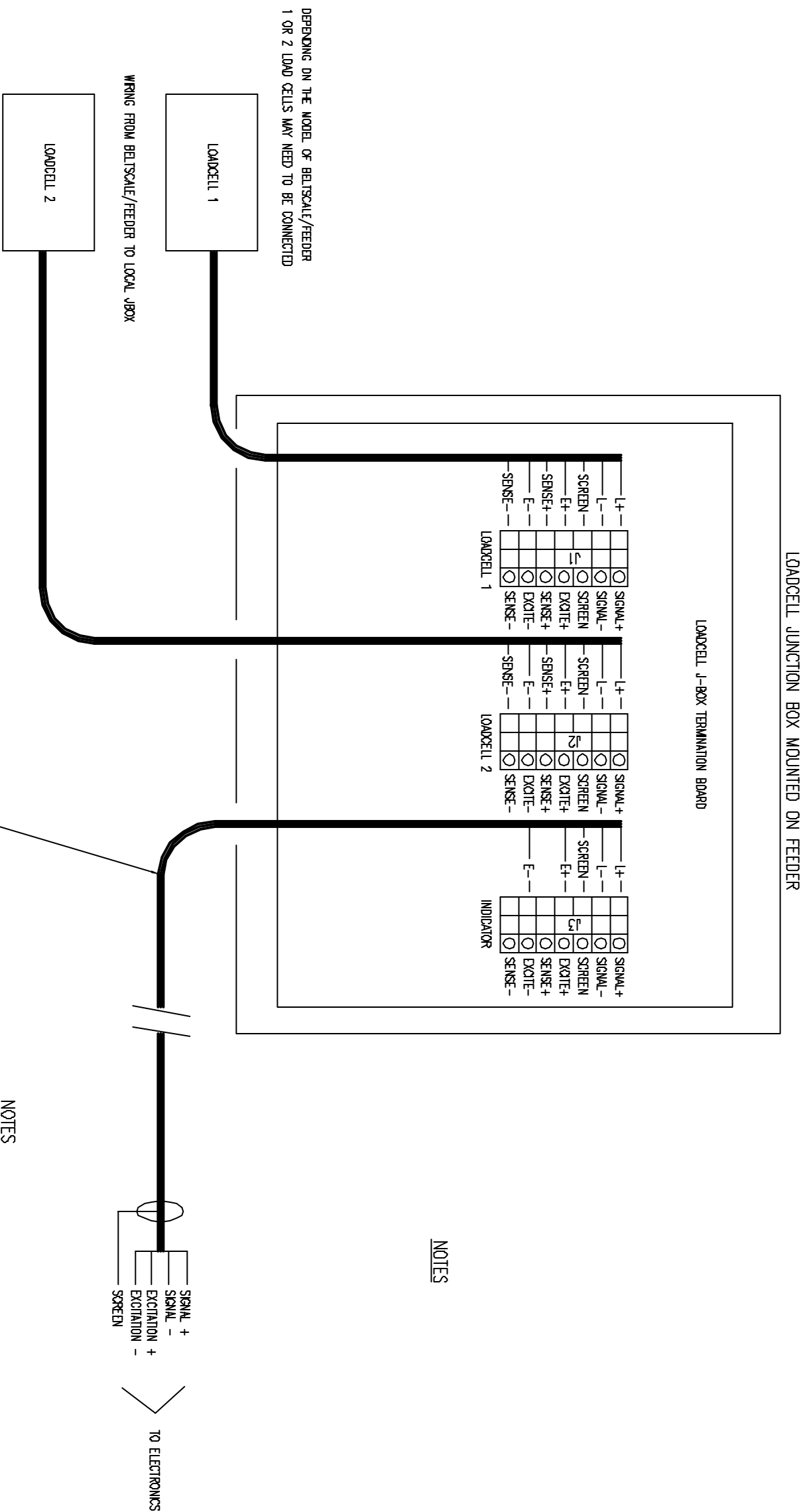
REVISIONS		UNLESS OTHERWISE STATED		DRAWN		TITLE		WEB-TECH AUSTRALIA PTY. LTD.		SIZE		DRAWING No.	
A:	04/11/98	ISSUED FOR APPROVAL		CHECKED		T.BERNARDI		ACKL 000 704 431		A1		NUMBER	
B:	09/12/98	TRANSIT BOLT ADDED TO ENLARGED VIEW AT G2		APPROVED		LANCE HARTLEY		11 ELECTRONICS STREET FIGHT WILE PLAINS, QUEENSLAND, 4113, AUSTRALIA		WTS2S200		REV.	
C:	18/12/98	LOADCELL ACCESS OPENINGS NOW SLOTTED		DATE		09/12/98		Phone 461-7581 2844 Fax 461-7581 0005		PROJECT		C	
ECA DATED 17/12/98		SCALE		SCALE		1:1.5		DO NOT SCALE IF IN DOUBT ASK		CAD FILE		WTS2S200	
		ASSEMBLIES		±0.5		±0.5		±10		±20		ALL DIMENSIONS IN MILLIMETRES UNLESS OTHERWISE SPECIFIED	
		NOMINAL SIZE		up to 50		above 50 up to 100		above 100 up to 300		above 300 up to 1000		above 1000	
		MACHINING		±0.1		±0.2		±0.3		±0.5		±1.0	
		FABRICATION		±0.5		±0.5		±0.5		±1.0		±2.0	
		ASSEMBLIES		±0.5		±0.5		±0.5		±1.0		±2.0	



- BE AWARE THAT THE RETURN TRAVEL OF THE BELT IS NOT TO FOUL THE INTERNAL FRAME OF THE BELT SCALE, DEFLECTION IDLERS TO BE INSTALLED IF THIS IS THE CASE.

1. CONVEYOR IDLERS FROM +C2 THRU TO -C2 (WEIGH QUALITY, 6 OFF) MUST BE NINE INLE IDLERS, NOT OFFSET IDLERS.
2. CONVEYOR IDLERS FROM +C3 THRU TO -C3 MUST BE MOUNTED AT RIGHT ANGLES TO THE DIRECTION OF BELT CENTRELING. DIMENSIONS SHOWN BETWEEN IDLERS MUST BE MAINTAINED TO A TOLERANCE OF $\pm 0.5mm$.
3. GENERALLY IDLER HEIGHTS FOR OFFSET IDLERS IS LESS THAN THOSE FOR NINE INLE IDLERS. PACKERS MAY BE USED TO RAISE OFFSET IDLERS TO THE HEIGHT OF NINE INLE IDLERS (REFER DETAIL B) AS A RULE. A 3.0mm GRADIENT PER METRE IS AN ALLOWABLE TOLERANCE. HEIGHT BETWEEN ROLL HEIGHTS, IGNORE THIS NOTE IF NINE INLE IDLERS ARE SOLELY USED.
4. ROLLS +C2 THRU TO -C2, INCLUDING W2 THRU TO W1 ARE TO BE DRILLED AND TAPPED M8, (16 ROLLS IN TOTAL). REFER DETAIL A.
5. PRIOR TO ALIGNING IDLERS, LOOSEN OFF THE TRANSIT / SHIPPING BOLTS AND REMOVE TRANSIT PACKERS, REFER TO DRAWING WISS2500 FOR THEIR LOCATION
6. ALL ROLLS MUST BE ADJUSTED TO STRINGLINE REFERENCE TO A TOLERANCE OF $\pm 10mm$, $-0.0mm$. LEVEL CENTRE ROLLS ON +C2 AND -C2 IDLERS PRIOR TO ANY ADJUSTMENTS. ENSURE ALL LOCKING NUTS ARE TIGHTENED AFTER ADJUSTMENTS ARE COMPLETED.

[illegible]



TYPE	L+	L-	E+	E-	SENSE+	SENSE-
TEDEA	RED	WHITE	GREEN	BLACK	BLUE	BROWN
RLHB8	WHITE	RED	BLUE	BLACK	GREEN	GREY
LFX	GREEN	WHITE	RED	BLACK	N/C	N/C
RL30003	GREEN	WHITE	RED	BLACK	N/C	N/C
WTD-132	GREEN	WHITE	RED	BLACK	N/C	N/C
WL3X0D	GREEN	WHITE	RED	BLACK	N/C	N/C

SOME LOADCELLS DON'T HAVE SENSE WIRES
IF THE LOAD CELL HAS SENSE WIRING TERMINATE AS
SHOWN MW1/MW5/OPTIMUS DO NOT REQUIRE SENSE WIRING

NOTES

REVISIONS A 29.02.96 ORIGINAL ISSUE									
UNLESS OTHERWISE STATED UNENLARGED DIMENSIONS TO BE WITHIN THE LIMITS SHOWN				DRAWN M.M. CHECKED M.M. APPROVED M.M. DATE A/P/D 18/06/2003		WEB-TECH AUSTRALIA PTY. LTD. ASK 101 PM 01 1 BERKERS STREET EIGHT ONE PLAZA, GLENDALE, VIC AUSTRALIA PO BOX 4000 EIGHT ONE PLAZA, GLENDALE, VIC AUSTRALIA MOBILE 0437-384100 FAX 0437-384100			
NOMINAL SIZE 50 100 150 200 300 400 500 600 800 1000		DATE A/P/D SCALE N.T.S.		DID NOT SCALE IF IN DOUBT ASK		TITLE LOADCELL JUNCTION BOX CONNECTION DIAGRAM			
ALL DIMENSIONS IN MILLIMETRES UNLESS OTHERWISE SPECIFIED						SIZE A1 NUMBER SMCIB-02 SHEET 1 REV. B			
THE DRAWING AND ANY INFORMATION OR SPECIFICALLY STATED OR NOT HEREIN ARE THE CONFIDENTIAL AND PROPRIETARY OF THE COMPANY AND SHALL BE USED ONLY FOR THE PURPOSES AND IN THE MANNER SPECIFIED BY THE COMPANY. NO PART OF THIS DRAWING OR ANY INFORMATION OR SPECIFICALLY STATED OR NOT HEREIN SHALL BE REPRODUCED OR TRANSMITTED IN ANY FORM OR BY ANY MEANS, ELECTRONIC OR MECHANICAL, INCLUDING PHOTOCOPYING, RECORDING, OR BY ANY INFORMATION STORAGE AND RETRIEVAL SYSTEM, WITHOUT THE WRITTEN PERMISSION OF THE COMPANY.						PROJECT CAD FILE			

[illegible]

WEB-TECH MENU DATA SHEET

Customer _____ Conveyor Designation _____

Model _____ Load Cell Cap/Type _____ Date _____

Serial No _____ Material _____ Data By _____

Contract No _____ Order No _____

Software Version No _____

MENU

MASTERWEIGH 5 DATA

- | | |
|----|---|
| 1 | Parameter Setup |
| | Capacity _____ Inc _____ Zero Ref _____ mV Precision Ref _____ mV |
| 2 | Pulses _____ per Belt Rev No. of Belt Revs _____ |
| 3 | Zero Calibration _____ mV Z Track _____ mV |
| 4 | Fixed Weight Calibration:
Span: _____ Target Weight: _____ Chains _____ Live Load Test: _____ |
| 5 | Emperical Span _____ |
| 6 | Null Level _____ |
| 7 | Autozero Tracking:
Zero Track if < _____ for _____ Revs Delay Time _____ secs |
| 8 | Load - cell Output:

Static (No Load) _____ mV Static (with Weights) _____ mV
Dynamic (No Load) _____ mV Dynamic (with Weights) _____ mV |
| 9 | Tacho Frequency _____ Hz Tacho Source: External / Stimulated / Hardware |
| 10 | Filter Factors:
Display _____ secs Rate O/P _____ secs Tacho I/P _____ secs |
| 11 | Displayed Units: tons / lbs / kgs / tonnes |
| 12 | Belt Speed _____ n @ Motor freq. = _____ Hz Belt Length _____ m |
| 15 | Access Code:

Operator Code _____ Configuration Code _____ |