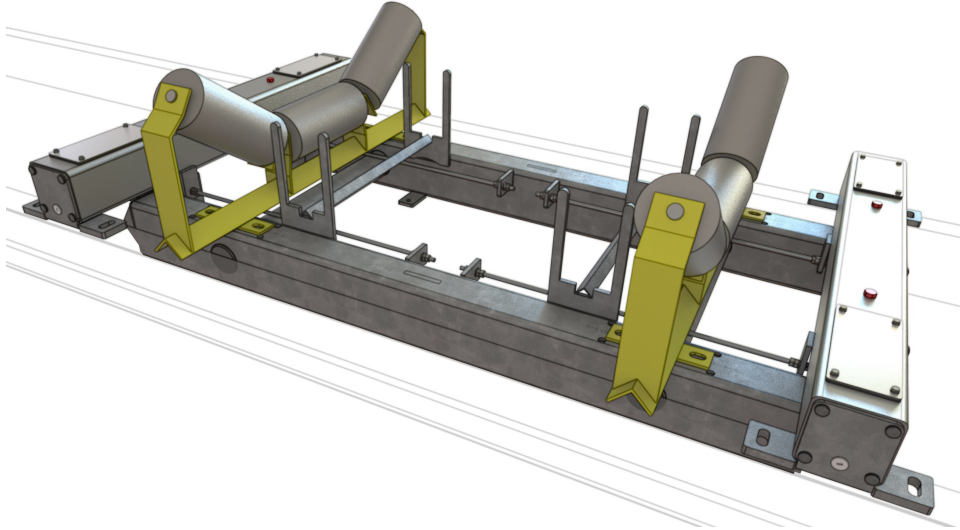


WTS2S2 Conveyor Belt Scale



The “WTS2S2” is one of Web Tech AutoWeigh’s “Inventory” type conveyor belt scales, and is suitable for applications including the measuring of material delivered to stockpiles and trucks, or monitoring plant performance.

Accuracies in the order of $\pm 0.5\%$ are achievable.

Weigh Frame

The model “WTS2S2” conveyor belt scale is a heavy-duty dual idler fully suspended weigh frame particularly suitable for the mining industry. Incorporating four (4) load cells, it is available to suit belt widths from 450mm to 2400mm. The weigh frame can be supplied in either mild steel galvanised, or stainless steel construction. Standard idler spacings of 1000mm, 1200mm and 1500mm are available.

Electronics

The “WTS2S2” belt scale system is normally supplied with our “Masterweigh 6” electronics. The “Masterweigh 6” electronics is a microprocessor based integrator and comes with the following standard features:

- Microprocessor based.
- 110/240VAC or 24VDC supply (optional).
- IP66 reinforced polyester enclosure.
- Modular in design – easily serviceable.
- Simple menu driven interface.
- Integral keypad with calibration “Hotkeys”.
- 2 x 40 character backlit LCD display.
- All commands in simple English – No hieroglyphics or codes used.
- 8 digit Mass Rate display.
- 8 digit Mass Total display.
- Isolated 4-20mA Rate output.
- Remote Totaliser output.
- “Weigher Healthy” relay output.
- Programmable “Auto Zero Tracking” function with “Out of Limits” relay output.
- Service menus allow load cell and speed sensor values to be read without the need for test meters.
- Automatic Zero & Span calibrations.
- Optional “Profibus”, or “Device Net” or “Ethernet/Modbus TCP”



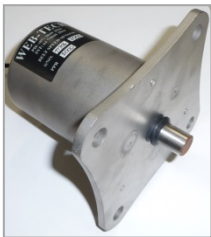
"Masterweigh 6" in standard
IP66 RFP Enclosure



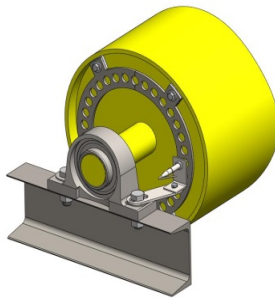
"Masterweigh 6" in optional
Stainless Steel Enclosure

Belt Speed Sensors

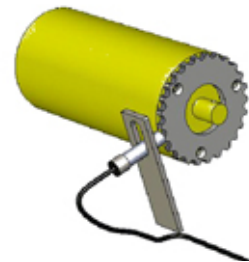
The "WTS2S2" belt scale is available with a number of different standard types of belt speed sensors to suit the application.



Stainless steel digital
Encoder (pulley mount)



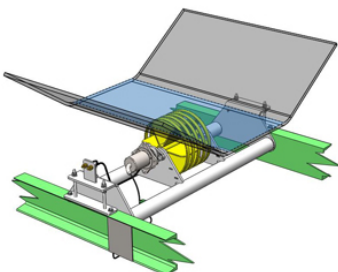
Proximity switch and
flags on tail pulley



Magnetic Pick-up
and sprocket on roll

Options

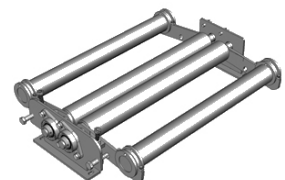
The model "WTS1S2" is available with a variety of options:



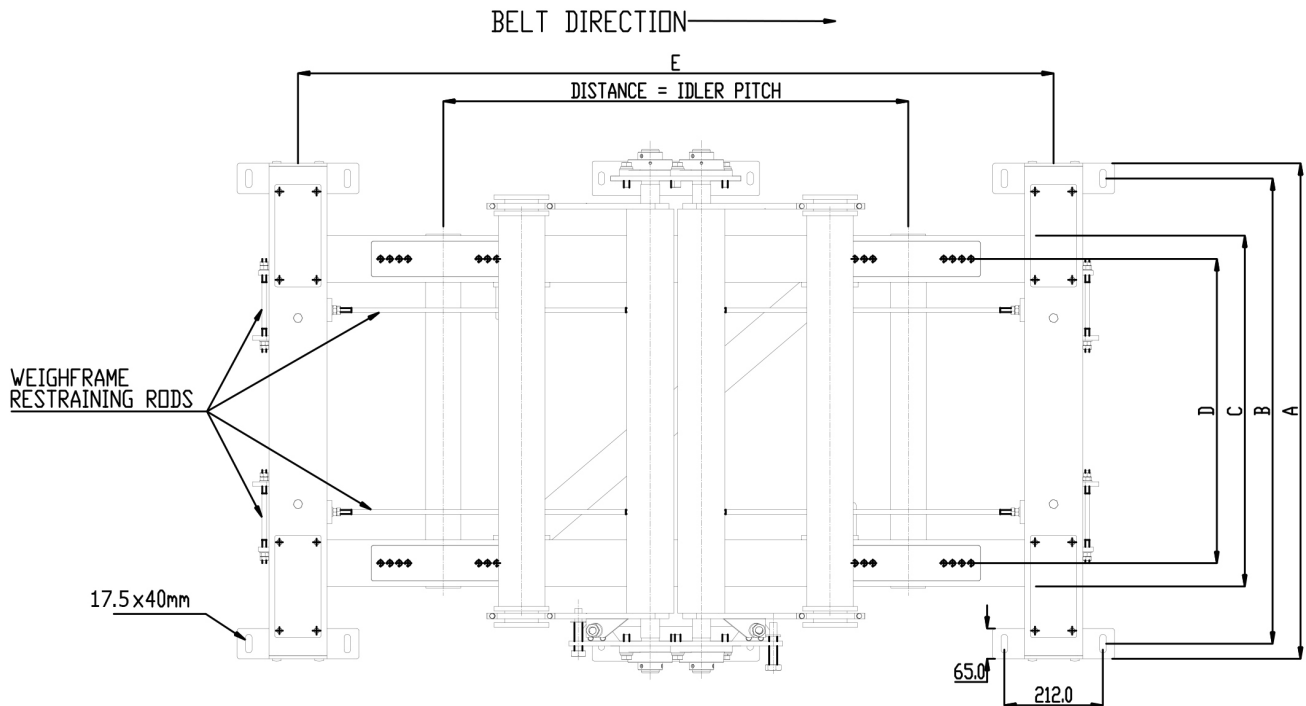
Optional Spiral Pulley
and mounting frame



Stainless steel sunshade
for electronics



"In-Situ" Calibration
Weight



BELT WIDTH	A	B	C	D
500mm	815.0	750.0	504.0	404.0
600mm (24")	915.0	850.0	604.0	504.0
650mm	965.0	900.0	654.0	554.0
750mm (30")	1065.0	1000.0	754.0	654.0
800mm	1115.0	1050.0	804.0	704.0
900mm (36")	1215.0	1150.0	904.0	804.0
1000mm	1315.0	1250.0	1004.0	904.0
1050mm (42")	1365.0	1300.0	1054.0	954.0
1200mm (48")	1515.0	1450.0	1204.0	1104.0
1350mm (54")	1715.0	1650.0	1354.0	1254.0
1400mm	1765.0	1700.0	1404.0	1304.0
1500mm (60")	1865.0	1800.0	1504.0	1404.0
1600mm	2065.0	2000.0	1604.0	1504.0
1800mm (72")	2265.0	2200.0	1804.0	1704.0
2000mm	2465.0	2400.0	2004.0	1904.0
2200mm	2665.0	2600.0	2204.0	2104.0

IDLER PITCH	E
1000mm	1625.0
1200mm	1825.0
1500mm	2025.0